

MC351/MC361/MC561

OKI
PRINTING SOLUTIONS



Configuration Guide



PREFACE

Every effort has been made to ensure that the information in this document is complete, accurate, and up-to-date. The manufacturer assumes no responsibility for the results of errors beyond its control. The manufacturer also cannot guarantee that changes in software and equipment made by other manufacturers and referred to in this guide will not affect the applicability of the information in it. Mention of software products manufactured by other companies does not necessarily constitute endorsement by the manufacturer.

While all reasonable efforts have been made to make this document as accurate and helpful as possible, we make no warranty of any kind, expressed or implied, as to the accuracy or completeness of the information contained herein.

The most up-to-date drivers and manuals are available from:

<http://www.okiprintingsolutions.com>

07110401 iss. 2; Copyright © 2010 Oki Europe Ltd. All rights reserved.

Oki is a registered trademark of Oki Electric Industry Company, Ltd.

Oki Printing Solutions is a trademark of Oki Data Corporation.

Energy Star is a trademark of the United States Environmental Protection Agency.

Microsoft, MS-DOS and Windows are registered trademarks of Microsoft Corporation.

Apple, Macintosh, Mac and Mac OS are registered trademarks of Apple Computer.

Other product names and brand names are registered trademarks or trademarks of their proprietors.

CONTENTS

Preface	2
Contents	3
Notes, cautions and warnings	6
About this guide	7
Documentation suite	7
Purpose of this guide	7
On-line usage	8
Printing pages	8
Configuring the network settings	9
Checking the common setup information	10
Setting up scan to e-mail and internet fax	10
Checking the e-mail settings of the computer	10
Setting the e-mail address for your machine	12
Configuring your machine for scan to e-mail and internet fax	13
Setting up scan to network PC	14
Checking the name of the computer	14
Determining the names of the items required for scan to network PC	16
Configuring the computer for scan to network PC	16
Managing profiles	22
Creating a profile for scan to network PC	22
Deleting a network profile	23
Managing the address book	24
Setting sender and reply to e-mail addresses (from/reply to)	24
Creating e-mail templates	25
Adding an e-mail address entry to the address book	26
Deleting an e-mail address entry from the address book	26
Modifying an e-mail address entry from the address book	27
Adding a group entry to the address book	27
Deleting a group address entry from the address book	28
Modifying a group address entry from the address book	28
Configuring the fax settings (MC361 and MC561)	29
Basic setup	29
Advanced set up	30
Connecting to a PBX	30
Automatic redial	31
Reception mode	31
Adding a telephone handset	32
Managing the phone book	33
Adding a speed dial entry to the phone book	33
Adding a group entry to the phone book	34
Deleting a speed dial entry from the phone book	34
Deleting a group dial entry from the phone book	34
Modifying a speed dial entry	35
Modifying a group dial entry	35
Registering an entry from reception or transmission history	35

User authentication and access control	36
PIN authentication	37
Registering a PIN	37
Enabling PIN authentication	37
Operation when PIN authentication is enabled	38
User name and password authentication	39
Registering a user name and password	39
Enabling user name and password authentication	39
Operation when user name and password authentication is enabled	39
Operation from the computer	40
Advanced network settings	42
Network setting items	42
TCP/IP	42
NetWare	44
EtherTalk	45
NBT/NetBEUI	46
E-mail send	46
E-mail receive	48
E-mail alert	49
SNMP	53
Printer trap	54
IPP	56
Windows rally	57
IEEE802.1X	57
Secure protocol server (Kerberos)	58
LDAP	58
Mail server	59
Security	60
IP filtering	61
MAC address filtering	62
SSL/TLS	62
IPSec	64
Maintenance	65
Time setup (SNTP settings)	65
Web printing	66
Changing network settings from the web page	67
Encrypting Communication by SSL/TLS	67
IPP printing (Windows only)	69
Encrypting communication by IPSec	71
Controlling access using IP address (IP filtering)	74
Controlling access using MAC address (MAC address filtering)	74
Error notification by e-mail (e-mail alert)	75
Using SNMPv3	76
Using IPv6	77
Enabling IPv6	78
Checking IPv6 address	78
Using IEEE802.1X	78
Configuring your machine for IEEE802.1X	78
Connecting your machine to authentication switch	79
Configuring LDAP server	80
Configuring secure protocols	80
Printing without printer driver (direct printing)	81
Printing PDFs	81
Configuring server to print files attached to e-mails	81
Changing settings on EtherTalk (Mac only)	82
Changing EtherTalk machine name	82
Changing EtherTalk zone	82

Other operations	83
Initializing network settings	83
Using DHCP	83
Configuring DHCP server	83
Configuring your machine.	84
Appendix A - menu system	86
Reports	87
Paper setup	88
Address book	90
Phone book	91
Profile	92
Network scan destination	94
Store document settings	94
View information	95
Shutdown.	95
Easy setup	96
Admin setup	97
Index	119

NOTES, CAUTIONS AND WARNINGS

NOTE

A note provides additional information to supplement the main text.

CAUTION!

A caution provides additional information which, if ignored, may result in equipment malfunction or damage.

WARNING!

A warning provides additional information which, if ignored, may result in a risk of personal injury.

ABOUT THIS GUIDE

NOTE

Images used in this manual may include optional features that your product does not have installed.

DOCUMENTATION SUITE

This guide is part of a suite of online and printed documentation provided to help you become familiar with your product and to make the best use of its many powerful features. The documentation is summarised below for reference and is found on the manuals DVD unless indicated otherwise:

- > **Installation Safety booklet:** provides information for safe use of your product.
This is a paper document that is packaged with the product and should be read before setting up your machine.
- > **Set-up guide:** describes how to unpack, connect and turn on your product.
This is a paper document that is packaged with the product.
- > **User's Guide:** helps you become familiar with your product and make the best use of its many features. Also included are guidelines for troubleshooting and maintenance to ensure that it performs at its best. Additionally, information is provided for adding optional accessories as your printing needs evolve.
- > **Configuration Guide:** provides machine, fax and network configuration information.
- > **Printing Guide:** helps you become familiar with the many features of the driver software supplied with your product.
- > **Barcode Printing Guide:** helps you become familiar with your product's built in barcode printing feature.
- > **Security Guide:** helps you become familiar with your product's security features.
- > **Installation Guides:** accompany consumable items and optional accessories to describe how to install them.
These are paper documents that are packaged with the consumables and optional accessories.
- > **On-line Help:** on-line information accessible from the printer driver and utility software.


PURPOSE OF THIS GUIDE

The purpose of this guide is to provide you with in-depth information on how configure the network, scan and fax for your machine.

ON-LINE USAGE

This guide is intended to be read on screen using Adobe Reader. Use the navigation and viewing tools provided in Adobe Reader.

There are many cross-references within this book, each highlighted as [blue text](#). When you click on a cross-reference the display will instantly jump to the part of the manual containing the referenced material.

By using the  button in Adobe Reader, you can navigate directly back to where you were before.

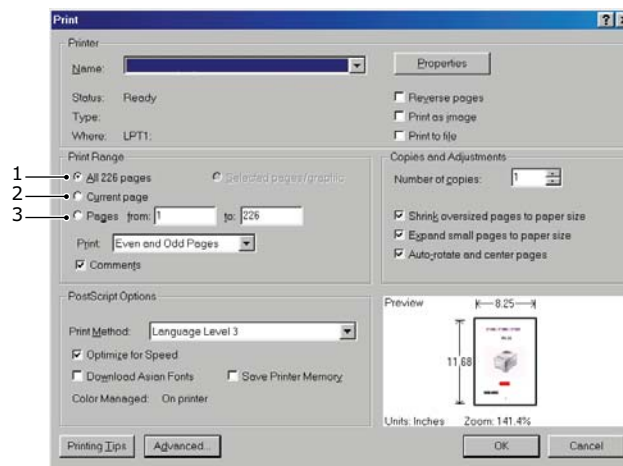
You can access specific information in two ways:

- > In the list of bookmarks down the left hand side of your screen, click on the topic of interest to jump to the required topic. (If the bookmarks are not available, use the ["Contents" on page 3.](#))
- > In the list of bookmarks, click on Index to jump to the Index. (If the bookmarks are not available, use the ["Contents" on page 3.](#)) Find the term of interest in the alphabetically arranged index and click on the associated page number to jump to the page containing the term.

PRINTING PAGES

The whole manual, individual pages, or sections may be printed. The procedure is:

1. From the toolbar, select **File > Print** (or press the **Ctrl + P** keys).
2. Choose which pages you wish to print:
 - (a) **All pages**, (1), for the entire manual.
 - (b) **Current page**, (2), for the page at which you are looking.



- (c) **Pages from and to**, (3), for the range of pages you specify by entering their page numbers.
- (d) Click **OK**.

CONFIGURING THE NETWORK SETTINGS

Functions such as Scan To E-mail, Scan To Network PC and Internet Fax enable you to send scanned data to a computer via the network connection. To use them, you need to set up your machine and the computer to which you want to send scanned data.

First check your computer settings and fill in the information in the **Your Value** column of the "Setup Information Form," on page 9. Then, configure your machine and the computer using the information in **Your Value**.

NOTE

Be sure to set up the network connection before continuing. Refer to the Setup Guide supplied with the machine.

Table 1: Setup Information Form

NO.	ITEM	EXAMPLE	YOUR VALUE
Common Setup Information			
A-1	Administrator password for your machine	aaaaaa	
A-2	IP address of your machine	192.168.0.2	
Setup Information Required for Scan To Email and Internet Fax			
B-1	Email address for your machine	mc561@test.com	(Up to 80 characters)
B-2	SMTP server address	smtp.test.com	
B-3	POP3 server address	pop3.test.com	
B-4	Authentication method	SMTP	
B-5	SMTP user ID	OKIMC561	
B-6	SMTP password	okimc561	
B-7	POP user ID	user	
B-8	POP password	okimc561	
B-9	Name of the email destination	User	
B-10	Email address of the email destination	user@test.com	
Setup Information Required for Scan To Network PC			
C-1	Name of the destination computer	PC1	
C-2	User name to log into the destination computer	mc561	(Up to 32 characters)
C-3	Password to log into the destination computer	mc561	(Up to 32 characters)
C-4	Profile name to register the settings	Sales	(Up to 16 characters)
C-5	Shared folder name on the destination computer	SalesDev	(Up to 64 characters)
C-6	File name of the scanned data	ScanData	(Up to 64 characters)

CHECKING THE COMMON SETUP INFORMATION

Check the common setup information for Scan To E-mail, Scan To Network PC and Internet Fax, and fill in the corresponding column in the ["Setup Information Form," on page 9](#).

Administrator password

Enter the administrator password of your machine in the ["Setup Information Form," on page 9](#).

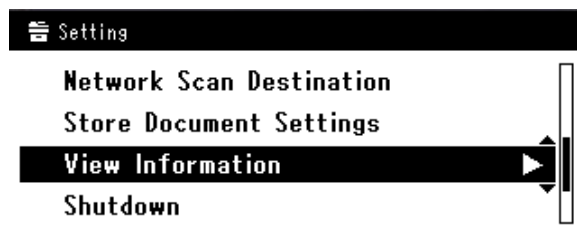
NOTE

The default administrator password is "aaaaaa".

Passwords are case sensitive.

IP address of your machine

1. Press the **SETTING** key on the control panel.
2. Using the **Down** arrow key, scroll to View Information and press **OK**.



3. Using the **Down** arrow key, scroll to Network and press **OK**.
4. Note the IPv4 address in the ["Setup Information Form," on page 9](#).

SETTING UP SCAN TO E-MAIL AND INTERNET FAX

The Scan To E-mail and Internet Fax functions enable you to send scanned images as a file attachment in an e-mail to the specified e-mail address on the network. To use these functions, set up the e-mail setting for your machine.

CHECKING THE E-MAIL SETTINGS OF THE COMPUTER

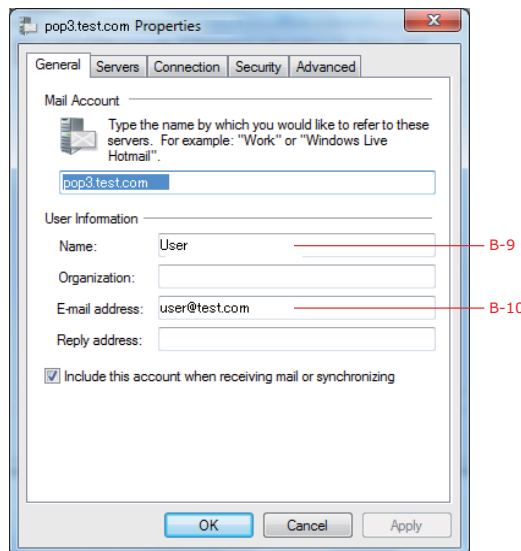
If a network administrator specifies the values such as a mail server account, password and email address for your machine, note them in the ["Setup Information Form," on page 9](#), otherwise follow the procedure below.

NOTE

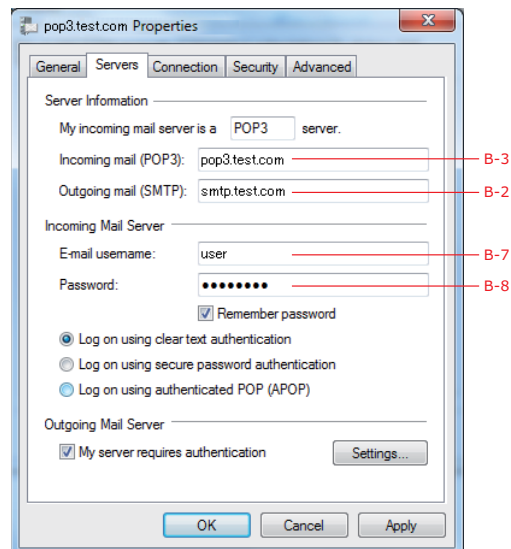
The procedure below uses Windows Live Mail on Windows 7. If you are using different email software, refer to the manual for the email software.

1. Click **Start > Windows Live Mail**.
2. From the drop-down menu, select **Tools > Accounts**.
If the menu bar is not displayed, click the **Menus** icon and then select **Show menu bar**.
3. Select the default mail account and then click **Properties**.

4. On the **General** tab, note the **Name** and **E-mail address** in the "Setup Information Form," on page 9.



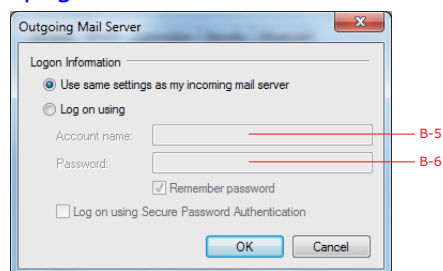
5. Click the **Server** tab, and then note each of the settings as shown:



If **My server requires authentication** is selected, enter "**SMTP**".

If it is not selected, enter "**POP**".

6. Select **My server requires authentication** and then click **Settings**.
7. Refer to the **Outgoing Mail Server** dialog box, and note the settings in the "Setup Information Form," on page 9.



If **Use the same settings as my incoming mail server** is selected, enter the same values as above.

If **Log on using** is selected, note the **Account name** and **Password**.

SETTING THE E-MAIL ADDRESS FOR YOUR MACHINE

Enter an e-mail address to be used by your machine in the ["Setup Information Form,"](#) on page 9.

- > If the e-mail address for your machine is specified by the network administrator, enter the email address in **B-1**.
- > If you are using an Internet Service Provider, obtain an e-mail address for your machine from the provider and then enter the e-mail address in **B-1**.
- > If the e-mail address for your machine is neither specified nor obtained, determine the e-mail address according to the value you entered in **authentication method**:
 - > If **authentication method** is "SMTP", determine an e-mail address and enter it in **B-1**.
 - > If **authentication method** is "POP", enter the same e-mail address as **B-12** in **B-1**.

NOTE

If you want your machine to receive e-mail, you must obtain an e-mail address for your machine from a network administrator or your Internet Service Provider.

CONFIGURING YOUR MACHINE FOR SCAN TO E-MAIL AND INTERNET FAX

Set up your machine for Scan To E-mail and Internet Fax using the information in the ["Setup Information Form,"](#) on page 9.

1. Press the **SETTING** button on the control panel.
2. Using the **Down** arrow key, scroll to **Easy Setup** and press **OK**.
3. Using the arrow keys and on-screen keypad, enter the Administrator password. Highlight **Done** and press **OK**.

NOTE

The default password is "aaaaaa".

4. Using the **Down** arrow key, scroll to **E-mail Setting** and then press the **Right** arrow key.
5. Press the **Right** arrow key, then enter the **SMTP server address (B-2)** using the arrow keys and on-screen keypad.
6. Highlight **Done** and then press **OK**.
7. Press the **Right** arrow key, then enter the **e-mail address for your machine (B-1)** using the arrow keys and on-screen keypad.
8. Highlight **Done** and then press **OK**.
9. Press the **Right** arrow key, then enter the **authentication method (B-4)** using the arrow keys and on-screen keypad.
10. Highlight **Done** and then press **OK**.
11. Press the **Right** arrow key, then enter the **SMTP user ID (B-5)** using the arrow keys and on-screen keypad.
12. Highlight **Done** and then press **OK**.
13. Press the **Right** arrow key, then enter the **SMTP password (B-6)** using the arrow keys and on-screen keypad.
14. Highlight **Done** and then press **OK**.
15. Press the **Right** arrow key, then enter the **POP-3 server address (B-3)** using the arrow keys and on-screen keypad.
16. Highlight **Done** and then press **OK**.
17. Press the **Right** arrow key, then enter the **POP-3 user ID (B-7)** using the arrow keys and on-screen keypad.
18. Highlight **Done** and then press **OK**.
19. Press the **Right** arrow key, then enter the **POP password (B-8)** using the arrow keys and on-screen keypad.
20. Highlight **Done** and then press **OK**.
21. When the setup menu screen is displayed, press **OK**.

The setup for Scan To E-mail and Internet Fax is complete.

SETTING UP SCAN TO NETWORK PC

The Scan To Network PC function enables you to send and save scanned images to the "shared folder" of a computer on the network. To use this function, register your machine on the computer as a user and create a shared folder, and then create a profile on your machine to register the settings for the computer.

NOTE

Before starting the setup, get permission from the network administrator to create a shared folder on the computer by following the procedure below.

The CIFS protocol is used in this procedure.

CHECKING THE NAME OF THE COMPUTER

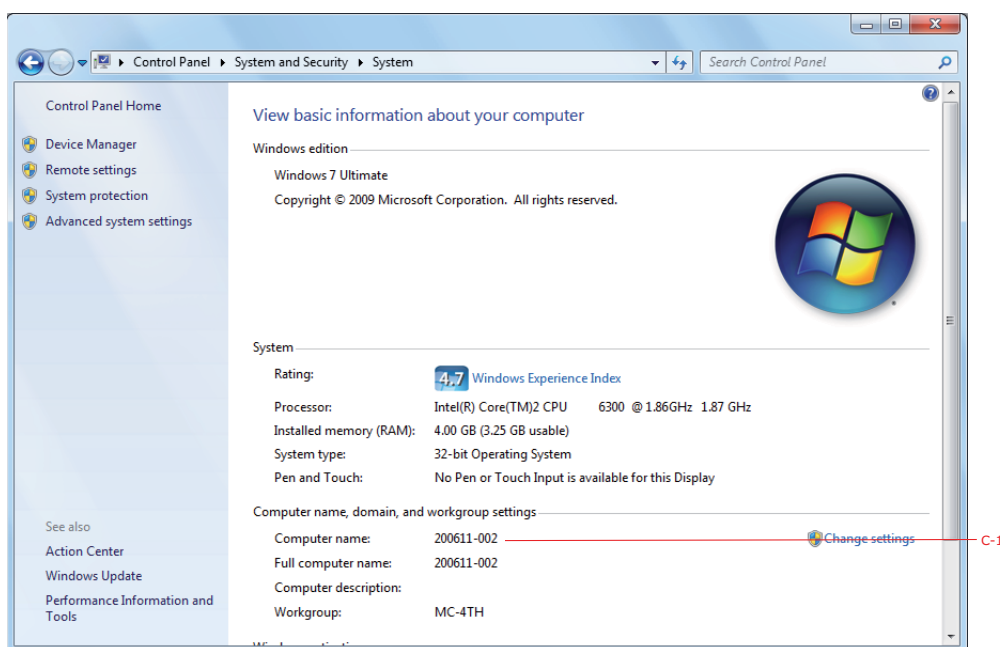
Check the name of the computer following the procedure below, and fill in **C-1** of the ["Setup Information Form,"](#) on page 9.

Windows 7, Windows Server 2008 R2, Windows Server 2008 and Vista

NOTE

The procedure below uses Windows 7 as an example. The display may differ depending on the operating system.

1. Click **Start > Control Panel**.
2. Select **System and Security**.
For Windows Server 2008 and Windows Vista, select **System and Maintenance**.
3. Click **System > See the name of this computer**.
4. Note the **Computer name** in **C-1**.



5. Close the window.

Windows Server 2003 and Windows XP

1. For Windows Server 2003, click **Start > Control Panel > System**.
For Windows XP, click **Start > Control Panel > Performance and Maintenance > System**.
2. Select the **Computer Name** tab and then click **Change**.
3. Note the **Computer name** in *C-1*.
4. Click **Cancel** to close the window.

Windows 2000

1. Click **Start > Settings > Control Panel**.
2. Double-click **System**.
3. Select the **Network Identification** tab and then click **Properties**.
4. Note the **Computer name** in *C-1*.
5. Click **Cancel** to close the window.

DETERMINING THE NAMES OF THE ITEMS REQUIRED FOR SCAN TO NETWORK PC

Determine the names of the following items and fill in **C-2** to **C-6** on the "[Setup Information Form](#)," on page 9.

- > User name to log into the destination computer (**C-2**)
- > Password to log into the destination computer (**C-3**)
- > Profile name to register the settings on your machine (**C-4**)
- > Shared folder name on the destination computer (**C-5**)
- > File name of the scanned data (**C-6**)

CONFIGURING THE COMPUTER FOR SCAN TO NETWORK PC

Register your machine on the computer as a user and then set up a shared folder to which scanned images are sent and saved.

NOTE

If the computer is in a domain, the procedure of adding a user account may be different to the procedure below.

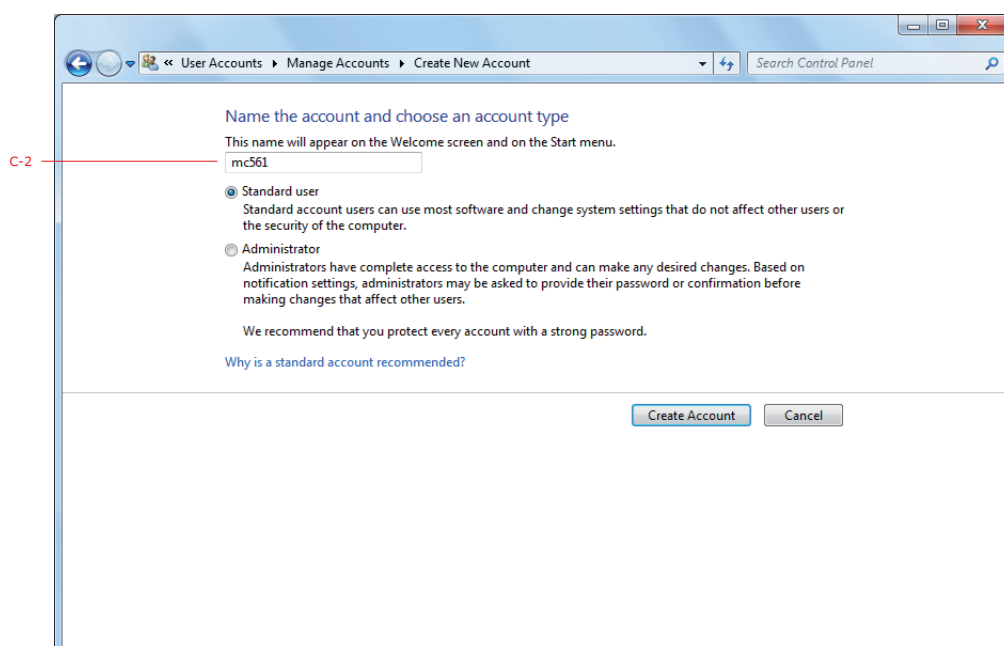
Refer to Windows help.

Windows 7, Windows Server 2008 R2, Windows 2008 and Windows Vista

NOTE

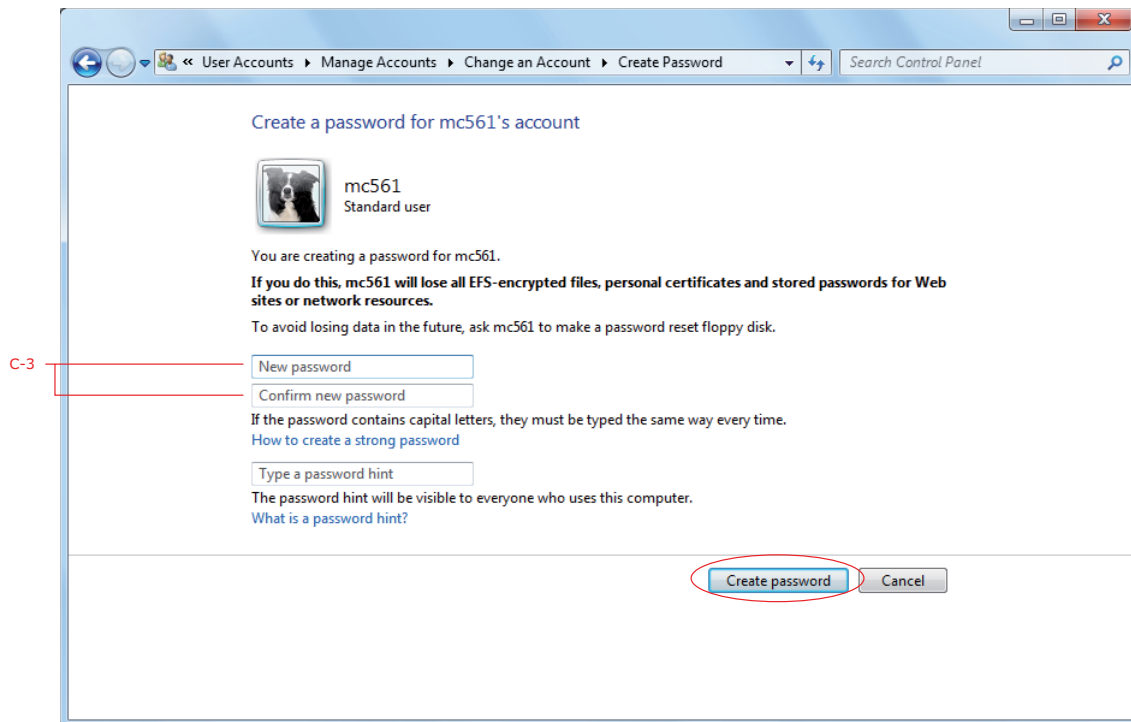
The procedure below uses Windows 7 as an example. The display may differ depending on the operating system.

1. Click **Start > Control Panel**.
2. Select **Add or remove user accounts**.
3. Select **Create a new account**.
4. Enter the **user name (C-2)** in the text box.



5. Ensure that **Standard user** is selected, and then click **Create Account**.
6. Click the icon of the user account created in step 5.

7. Select **Create a password**.
8. Enter the *password (C-3)* in **New password** and **Confirm for new password**, and then click **Create password**.

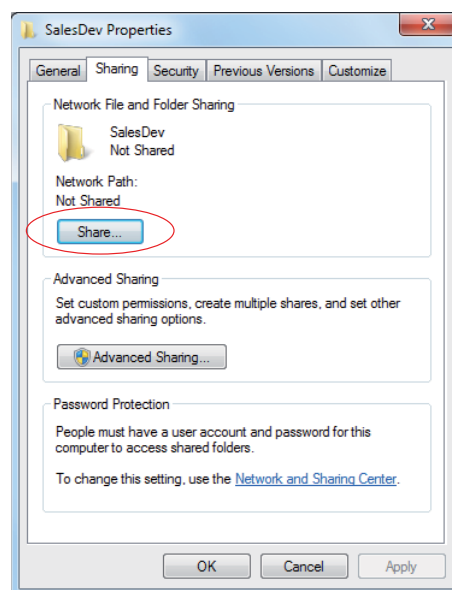


9. Close the control panel.
10. Create a new folder on the computer with the *shared folder name* entered in **C-5**.

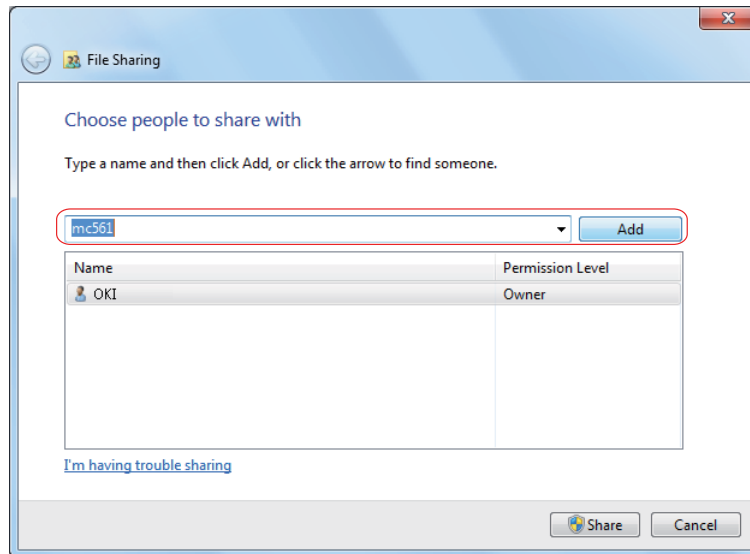
NOTE

It is recommended that you create a folder in the local drive, not on the desktop or "My Documents".

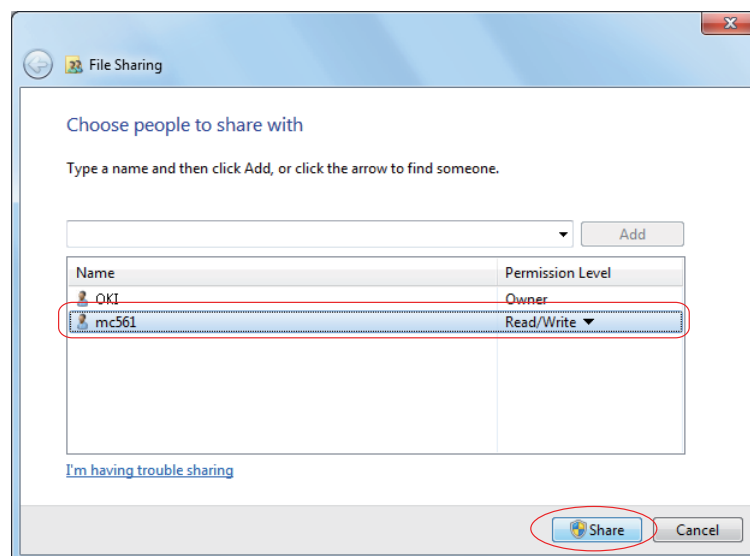
11. Right-click the folder created in step 10 and select **Properties**.
12. Select the **Sharing** tab and then click **Share**.



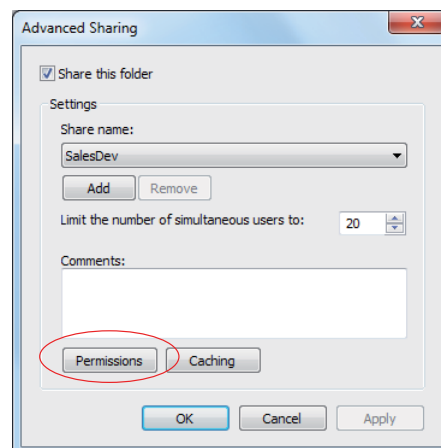
13. Select the user account created in step 5 from the drop down box, then click **Add**.



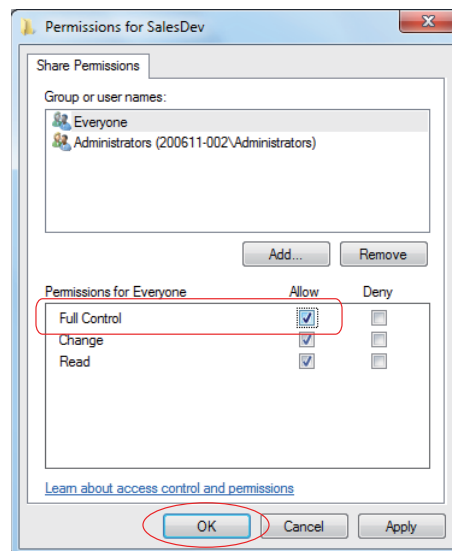
14. Select the user added in step 13 and select the permission level, then click **Share**.



15. Click **Done**.
16. Click **Advanced Sharing** on the **Sharing** tab.
17. Click **Permissions**.



18. Select the user added in step 13 and select the **Allow** check box for **Full Control**, then click **OK**.



19. Close the folder's property dialog box.

NOTE

Create a profile to complete the setup for Scan To Network PC. Refer to "Creating a profile for scan to network PC" on page 22.

Windows Server 2003

1. Click **Start > Administrative Tools > Server Management**.
2. Click **Users**.
3. Select **Add a user**.
4. Enter the **user name (C-2)** in the **First name** text box and then click **Next**.
5. Enter the **password (C-3)** in **Password** and **Confirm password**.
6. Select the **Cannot change password** and then click **Next**.
7. Click **Finish**.
8. Click **Close**.
9. Create a new folder on the computer with the **shared folder name** entered in C-5.

NOTE

It is recommended that you create a folder in the local drive, not on the desktop or "My Documents".

10. Right-click the folder created in step 9, and then select **Sharing and Security**.
11. On the **Sharing** tab, select **Share this folder** and then click **Permissions**.
12. Click **Add**.
13. Enter the **user name (C-2)** and then click **Check Names**.
14. Check that the **user name (C-2)** is displayed, and then click **OK**.
15. Select the **Allow** check box for **Full Control**, and then click **OK**.

16. Close the folder's property dialog box.

NOTE

Create a profile to complete the setup for Scan To Network PC. Refer to "Creating a profile for scan to network PC" on page 22.

Windows XP

1. Click **Start > Control Panel**.
2. Double-click **User Accounts**.
3. Select **Create a new account**.
4. Enter the **user name (C-2)** in the text box and click **Next**.
5. Select **Limited** and click **Create Account**.
6. Click the icon of the user account created in step 5.
7. Select **Create a password**.
8. Enter the **password (C-3)** in **Type a new password** and **Type the new password again to confirm**, and then click **Create Password**.
9. Close the control panel.
10. Create a new folder on the computer with the **shared folder name** entered in **C-5**.

NOTE

It is recommended that you create a folder in the local drive, not on the desktop or "My Documents".

11. Right-click the folder created in step 10, and then select **Sharing and Security**.
12. Click **If you understand the security risks but want to share files without running the wizard, click here..**

NOTE

*If a pop-up screen displays, select **Share this folder** and click **Permissions**. Proceed to step 15.*

13. Select **Share this folder** in Windows Firewall, and then click **OK**.
14. Select the **Share this folder on the network** and **Allow network users to change my files** check box, and then click **OK**.
15. Select the **Allow** check box for **Full Control**, and then click **OK**.

NOTE

Create a profile to complete the setup for Scan To Network PC. Refer to "Creating a profile for scan to network PC" on page 22.

Windows 2000

1. Right-click **My Computer** on the desktop and then select **Manage**.
2. In the right window, double-click **System Tools > Local Users and Groups**, and then Right-click **Users** and select **New User**.
3. Enter the *user name (C-2)* in **User name** and the *password (C-3)* in **Password** and **Confirm Password**.
4. Select **User can not change password** and **Password never expires**, and then click **Create**.

Click **Close** to close the **New User** dialog.

NOTE

*If **User must change password at next logon** is selected, clear it so that you can select **User can not change password** and **Password never expires**.*

5. Double-click **User** and check that the user created in step 4 is displayed. Close the **Computer Management** window.
6. Create a new folder on the computer with the *shared folder name* entered in C-5.

NOTE

It is recommended that you create a folder in the local drive, not on the desktop or "My Documents".

7. Right-click the folder created in step 6 and then select **Sharing**.
8. Select **Share this folder** and then click **Permissions**.
9. Click **Add**.
10. Select the user account created in step 4 and then click **Add**.
11. Check that the user account is displayed, and then click **OK**.
12. Select the **Allow** check box for **Full Control**, and then click **OK**.
13. Ensure that the icon of the shared folder changes into the icon with a hand, and then close the window.

NOTE

Create a profile to complete the setup for Scan To Network PC. Refer to ["Creating a profile for scan to network PC" on page 22](#).

MANAGING PROFILES

CREATING A PROFILE FOR SCAN TO NETWORK PC

Register the information you configured on the computer as a profile. It is necessary when you perform Scan To Network PC with the computer.

1. Press the **SETTING** button on the control panel to prompt the **Setting** screen.
2. Using the **Down** arrow key, scroll to **Profile** and press **OK**.
3. Select the desired profile number.
4. Press the **Right** arrow key to prompt the **Operation Menu** screen.
From here you can register or sort profiles.
5. When registering a new profile, press the **Right** arrow key to prompt the **Profile** screen.
6. Ensure **Profile Name:** is highlighted then press the **Right** arrow key.
7. Using the arrow keys and on-screen keypad, enter the information in **C-4**.

NOTE

MC561 only: You can also use the qwerty keyboard to enter details.

8. Using the arrow keys, highlight **Done** and press **OK**.
9. Using the **Down** arrow key, scroll to **Target URL** then press the **Right** arrow key.
10. Using the arrow keys and on-screen keypad, enter the **name of the destination computer (C-1)** and the **shared folder name (C-5)** as "**\\name of the destination computer\\shared folder name**".
11. Using the arrow keys, highlight **Done** and press **OK**.
12. Using the **Down** arrow key, scroll to **User Name** then press the **Right** arrow key.
13. Using the arrow keys and on-screen keypad, enter a suitable **user name (C-2)**.

NOTE

*If domain management is done, enter "**user name@domain name**".*

14. Using the arrow keys, highlight **Done** and press **OK**.
15. Using the **Down** arrow key, scroll to **Password** then press the **Right** arrow key.
16. Using the arrow keys and on-screen keypad, enter a suitable **password (C-3)**.
17. Using the arrow keys, highlight **Done** and press **OK**.
18. Using the **Down** arrow key, scroll to **File Name** then press the **Right** arrow key.
19. Using the arrow keys and on-screen keypad, enter a suitable **file name (C-6)**.

NOTE

You can enter up to 64 characters.

By adding "#n" to the end of the file name, a serial number is automatically assigned to the end of the name of sent files.

By adding "#d" to the end of the file name, a date is automatically assigned to the end of the name of sent files.

20. Using the arrow keys, highlight **Done** and press **OK**.
21. Configure other items if necessary, for example:
\\PC1\\SalesDev

22. Press **OK** to register the settings and save the profile entry.
The setup for Scan To Network PC is complete.

DELETING A NETWORK PROFILE

To delete a network profile:

1. Press the **SETTING** button on the control panel to prompt the **Setting** screen.
2. Using the **Down** arrow key, scroll to `Profile List` and press **OK**.
3. Select the desired profile number.
4. Ensure `Delete` is highlighted then press the **Right** arrow key.
5. At the prompt:
 - > press **OK** to continue deleting the profile entry,
 - or...
 - > use the **Right** arrow key to highlight `No`, then press **OK** to cancel.

MANAGING THE ADDRESS BOOK

SETTING SENDER AND REPLY TO E-MAIL ADDRESSES (FROM/REPLY TO)

You can set the e-mail address from which e-mails are sent and the address to which responses are sent.

1. Press the **SETTING** button.
2. Using the **Down** arrow key, scroll to `Admin Setup` and then press **OK**.
3. Using the arrow keys and on-screen keyboard, enter the administrator password.

NOTE

The default password is "aaaaaa".

MC561 only: You can also use the qwerty keyboard to enter details.

4. Select `Done` and then press **OK**.
5. Using the **Down** arrow key, scroll to `Scanner Setup` and then press **OK**.
6. Using the **Down** arrow key, scroll to `E-mail Setup` and then press **OK**.
7. Using the **Down** arrow key, scroll to `From/Reply to` and then press **OK**.
8. Using the **Down** arrow key, scroll to `From or Reply to` and then press **OK**.
9. Using the on-screen keyboard, enter the e-mail address up to 80 characters.

NOTE

MC561 only: You can also use the qwerty keyboard to enter details.

10. Select `Done` and then press **OK**.

NOTE

You can select e-mail addresses from the address book.

11. Using the **Down** arrow key, scroll to `Close` and then press **OK**.
12. Press the **RESET/LOGOUT** button.

CREATING E-MAIL TEMPLATES

You can create up to five e-mail templates with various subject lines and body text.

Registering a subject

1. Press the **SETTING** button.
2. Using the **Down** arrow key, scroll to `Admin Setup` and then press **OK**.
3. Using the arrow keys and on-screen keyboard, enter the administrator password.

NOTE

The default password is "aaaaaa".

MC561 only: You can also use the qwerty keyboard to enter details.

4. Select `Done` and then press **OK**.
5. Using the **Down** arrow key, scroll to `Scanner Setup` and then press **OK**.
6. Using the **Down** arrow key, scroll to `E-mail Setup` and then press **OK**.
7. Using the **Down** arrow key, scroll to `Template` and then press **OK**.
8. Make sure that `Edit Subject` is selected and then press **OK**.
9. Using the **Down** arrow key, select a template entry number and then press **OK**.
10. Using the on-screen keyboard, enter the subject up to 80 characters.

NOTE

MC561 only: You can also use the qwerty keyboard to enter details.

11. Select `Done` and then press **OK**.

Registering body text

1. Follow steps 1 to 7 in "[Registering a subject](#)" on page 25.
2. Using the **Down** arrow key, scroll to `Edit Body` and then press **OK**.
3. Using the on-screen keyboard, enter the body text up to 256 characters.

NOTE

MC561 only: You can also use the qwerty keyboard to enter details.

4. Select `Done` and then press **OK**.

ADDING AN E-MAIL ADDRESS ENTRY TO THE ADDRESS BOOK

The machine can hold up to 100 e-mail addresses in the address book. To assign a new e-mail address to the address book:

1. Press the **SETTING** button on the control panel.
2. Using the **Down** arrow key, scroll to **Address Book** and press **OK**.
3. Press **OK** to select **E-mail Address**.
4. Using the arrow keys, scroll to the required entry position and press **OK**.
5. Press **OK** to select **Register**.
6. Press the **Right** arrow key to select **Name**.
7. Using the keypad or arrows keys and the on-screen keypad, type in the name.

NOTE

The maximum length of name is 16 characters.

If you do not enter a name, this column remains blank.

8. Highlight **Done** and press **OK**.
9. Using the **Down** arrow key, scroll to **E-mail Address** and press the **Right** arrow key.
10. Using the keypad or arrows keys and the on-screen keypad, type in the new e-mail address.

NOTE

The maximum length of address is 80 characters.

11. Highlight **Done** and press **OK**.
12. If required, use the arrow keys and scroll to **Group No.** then press the **Right** arrow key.
13. Using the arrow keys, select the group number to assign the e-mail address to and press **OK**.
The check box is selected. You can select multiple entries.
14. Press the **Right** arrow key to complete.
15. Press **OK** to confirm.
16. Press **OK** once more to add your entry to the address book.
17. Press the **Left** arrow key to exit the menu.

DELETING AN E-MAIL ADDRESS ENTRY FROM THE ADDRESS BOOK

To delete an e-mail address entry from the address book:

1. Press the **SETTING** button on the control panel.
2. Using the **Down** arrow key, scroll to **Address Book** and press **OK**.
3. Press **OK** to select **E-mail Address**.
4. Using the arrow keys, scroll to the required entry position and press **OK**.
5. Using the arrow keys, scroll to **Delete** and press **OK**.
6. At the prompt select **Yes** to continue or select **No** to cancel the operation.
7. Press **OK**.

8. Press the **Left** arrow key to exit the menu.

MODIFYING AN E-MAIL ADDRESS ENTRY FROM THE ADDRESS BOOK

To edit an e-mail address entry from the address book:

1. Press the **SETTING** button on the control panel.
2. Using the **Down** arrow key, scroll to **Address Book** and press **OK**.
3. Press **OK** to select **E-mail Address**.
4. Using the arrow keys, scroll to the required entry position and press **OK**.
5. Press **OK** to select **Edit**.
6. Modify the **Name**, **E-mail Address** and/or **Group No.** details as required then press **OK**.
7. Press the **Left** arrow key to exit the menu.

ADDING A GROUP ENTRY TO THE ADDRESS BOOK

The machine can hold up to 20 group addresses. To add a new group address to the address book:

1. Press the **SETTING** button on the control panel.
2. Using the **Down** arrow key, scroll to **Address Book** and press **OK**.
3. Using the **Down** arrow key, scroll to **E-mail Group** and press **OK**.
4. Using the arrow keys, scroll to the required entry position and press **OK**.
5. Press **OK** to select **Register**.
6. Press the **Right** arrow key to select **Name**.
7. Using the keypad or arrows keys and the on-screen keypad, type in the name.

NOTE

The maximum length of name is 16 characters.

8. Highlight **Done** and press **OK**.
9. Using the **Down** arrow key, scroll to **Address No.** and press the **Right** arrow key.
10. Using the arrow keys, select the destination to assign the e-mail group to and press **OK**.

The check box is selected. You can select multiple entries.

11. Press the **Right** arrow key to complete.
12. Press **OK** to confirm.
13. Press **OK** once more to add your entry to the address book.
14. Press the **Left** arrow key to exit the menu.

DELETING A GROUP ADDRESS ENTRY FROM THE ADDRESS BOOK

To delete a group address entry from the address book:

1. Press the **SETTING** button on the control panel.
2. Using the **Down** arrow key, scroll to `Address Book` and press **OK**.
3. Using the **Down** arrow key, scroll to `E-mail Group` and press **OK**.
4. Using the arrow keys, scroll to the required entry position and press **OK**.
5. Using the arrow keys, scroll to `Delete` and press **OK**.
6. At the prompt select `Yes` to continue or select `No` to cancel the operation.
7. Press **OK**.
8. Press the **Left** arrow key to exit the menu.

MODIFYING A GROUP ADDRESS ENTRY FROM THE ADDRESS BOOK

To edit a group address entry from the address book:

1. Press the **SETTING** button on the control panel.
2. Using the **Down** arrow key, scroll to `Address Book` and press **OK**.
3. Using the **Down** arrow key, scroll to `E-mail Group` and press **OK**.
4. Using the arrow keys, scroll to the required entry position and press **OK**.
5. Press **OK** to select `Edit`.
6. Modify the `Name` and/or `Address No.` details as required then press **OK**.
7. Press the **Left** arrow key to exit the menu.

CONFIGURING THE FAX SETTINGS (MC361 AND MC561)

BASIC SETUP

Minimum configuration requirements; a PSTN telephone line connection.

If you wish to connect an external telephone or answering machine, refer to ["Adding a telephone handset" on page 32](#).

Your MFP has to be set up properly to allow faxing from the machine. The following parameters **must** be set before using the fax function:

- > Date and time
- > Local fax number
- > Sender ID

NOTE

If you ran the Oki driver installer program from the DVD-ROM you may have already set the time zone, date and time via the Panel Language Setup utility.

There are other parameters that can be adjusted to suit your personal preferences later if required, refer to fax set up table for details (See ["Advanced set up" on page 30](#)).

To set fax parameters:

1. Press the **SETTING** button on the control panel.
2. Using the **Down** arrow key, scroll to `Easy Setup` and press **OK**.
3. Using the arrow keys and on-screen keypad, enter the Administrator password. Highlight `Done` and press **OK**.

NOTE

The default password is "aaaaaa".

4. Press the **Right** arrow key to select `Date/Time Setting`.
5. Using the arrow keys, select the correct time zone and press **OK**.
6. Using the arrow keys, select the correct daylight saving option and press **OK**.
7. Press **OK** to select `Manual`.
8. Using the arrow keys, enter today's date.

NOTE

*Use the **Right** and **Left** arrow keys to move between digits.*

9. Press **OK**.
10. Using the arrow keys, enter the correct time.

NOTE

*Use the **Right** and **Left** arrow keys to move between digits.*

11. Press **OK**.
12. Using the **Down** arrow key and scroll to `Fax Setting` then press **Right** arrow key.
13. Press the **Right** arrow key to select `Fax Number`.
14. Using the keypad and on screen options enter the fax number for this MFP.
15. Highlight `Done` and press **OK**.

16. Press the **Right** arrow key to select `Sender ID`.
17. Using the keypad or arrow keys and on screen keyboard, enter the sender ID.

NOTE
Maximum 22 characters.

18. Highlight `Done` and press **OK**.
19. Press **OK** to complete.
20. Press the **Left** arrow key to exit the menu.

NOTE
By default the country code is set to International. If you need to change this, refer to ["Country Code" on page 101](#).

If required, set the dialling method for your region (Pulse or Tone). Refer to ["MF\(Tone\)/DP\(Pulse\)" on page 117](#).

If connecting the machine through a private branch exchange (PBX) line, you must also specify a dial prefix to allow the machine to obtain an external line before dialling. Refer to ["Connecting to a PBX" on page 30](#).

ADVANCED SET UP

Your machine offers a multitude of features which reduce the time required for manual operation and make fax communications more efficient.

CONNECTING TO A PBX

Private branch exchanges (PBXs) are private telephone systems used to route calls internally, for example, in a company. When dialling a telephone number, if a prefix is required to open an outside line, the line is connected to a PBX. If this MFP is going to be connected to a PBX, please make the following changes to enable it to recognise the prefix digits in the telephone numbers used to obtain access to the outside line. After dialling the prefix digits, the MFP will wait until the outside line is available (secondary dial tone detected) before dialling the rest of the number.

1. Press the **SETTING** button on the control panel.
2. Using the **Down** arrow key, scroll to `Admin Setup` and press **OK**.
3. Using the arrow keys and on-screen keypad, enter the Administrator password. Highlight `Done` and press **OK**.
4. Using the **Down** arrow key, scroll to `Fax Setup` and press **OK**.
5. Using the **Down** arrow key, scroll to `Other Settings` and press **OK**.
6. Using the **Down** arrow key, scroll to `Prefix` and press **OK**.
7. Using the keypad, arrow keys and on screen options, enter the required prefix and press **OK**.
8. Press the **Left** arrow key to exit the menu.

AUTOMATIC REDIAL

You can set the fax to automatically redial if the initial fax transmission fails. The machine will redial on:

- > Line busy
- > No answer
- > Communication error

To set auto-redial:

1. Press the **SETTING** button on the control panel.
2. Using the **Down** arrow key, scroll to `Admin Setup` and press **OK**.
3. Using the arrow keys and on-screen keypad, enter the Administrator password. Highlight `Done` and press **OK**.
4. Using the **Down** arrow key, scroll to `Fax Setup` and press **OK**.
5. Using the **Down** arrow key, scroll to `Other Settings` and press **OK**.
6. Press **OK** to select the `Redial Tries`.
7. Using the keypad, enter the required number of redial attempts (between 0 and 9), then press **OK** to confirm.
8. Using the **Down** arrow key, scroll to `Redial Interval` and press **OK**.
9. Using the keypad, enter the required redial interval (between 1 and 5 minutes), then press **OK** to confirm.
10. Press the **Left** arrow key to exit the menu.

RECEPTION MODE

You can change the way your MFP handles incoming fax transmissions and telephone calls (if you have a telephone handset connected) depending on your office requirements.

Choose from:

- > Fax Ready Mode
- > Tel/Fax Ready Mode
- > Ans/Fax Ready Mode
- > Tel Ready Mode
- > DRD

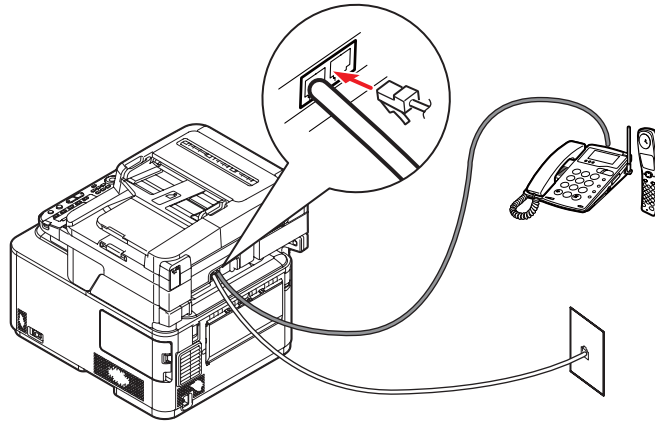
To change the reception mode:

1. Press the **SETTING** button on the control panel.
2. Using the **Down** arrow key, scroll to `Admin Setup` and press **OK**.
3. Using the arrow keys and on-screen keypad, enter the Administrator password. Highlight `Done` and press **OK**.
4. Using the **Down** arrow key, scroll to `User Install` and press **OK**.
5. Using the **Down** arrow key, scroll to `Reception Mode` and press **OK**.
6. Using the arrow keys, select the required reception mode and press **OK**.
7. Press the **Left** arrow key to exit the menu.

The machine behaviour differs depending on the specified reception mode, refer to the User's Guide for details.

ADDING A TELEPHONE HANDSET

If you want to add a telephone handset to your MFP, connect the line to the Tel socket (in certain countries it may be necessary to use a telephone plug adaptor).



You will also need to update the telephone settings to set the ring response:

1. Press the **SETTING** button on the control panel.
2. Using the **Down** arrow key, scroll to **Admin Setup** and press **OK**.
3. Using the arrow keys and on-screen keypad, enter the Administrator password. Highlight **Done** and press **OK**.
4. Using the **Down** arrow key, scroll to **Fax Setup** and press **OK**.
5. Using the **Down** arrow key, scroll to **Other Settings** and press **OK**.
6. Using the **Down** arrow key, scroll to **Ring Response** and press **OK**.
7. Using the arrow keys, select the required response setting (between 1 ring and 20 seconds) and press **OK**.
8. Press the **Left** arrow key to exit the menu.

NOTE

You must also set the reception mode to the appropriate setting. See ["Reception mode" on page 31](#).

NOTE

Dialling for speech purposes is not available using the MFP keypad or speed dial keys.

MANAGING THE PHONE BOOK

The following section describes how to add/remove/modify speed and group dial entries to/from the Phone Book.

ADDING A SPEED DIAL ENTRY TO THE PHONE BOOK

The machine can hold up to 100 speed dial numbers in the phone book. To add a new speed dial number to the phone book:

1. Press the **SETTING** button on the control panel.
2. Using the **Down** arrow key, scroll to Phone Book and press **OK**.
3. Press **OK** to select Speed Dial List.
4. Using the arrow keys, scroll to the required entry position and press **OK**.
5. Press **OK** to select Register.
6. Press the **Right** arrow key to select Name.
7. Using the keypad or arrows keys and the on-screen keypad, type in the name.

NOTE

The maximum length of name is 24 characters.

8. Highlight Done and press **OK**.
9. Using the **Down** arrow key, scroll to Fax Number and press the **Right** arrow key.
10. Using the keypad, type in the destination fax number.

NOTE

The maximum length of number is 40 digits.

If the destination fax number has an "extension number", press the Pause button between numbers. The machine will enter a pause when dialling.

If your MFP is connected to a PBX (private branch exchange), you will need to add a Prefix in order to access to the outside line. Refer to ["Connecting to a PBX" on page 30](#).

If you need to change the dialling method for the region, press the Tone button to change the call parameters for this particular number.

*If you make a mistake while entering the number, press the **Clear** button to delete the last digit.*

11. Highlight Done and press **OK**.
12. If required, use the arrow keys and scroll to Group No. then press the **Right** arrow key.
13. Using the arrow keys, select the group number to assign the fax number to and press **OK**.

The check box is selected. You can select multiple entries.

NOTE

Numbers registered to groups from the Speed Dial function are synchronized with the numbers that are registered to groups using the Group No. function.

14. Press the **Right** arrow key to complete.
15. Press **OK** to confirm.
16. Press **OK** once more to add your entry to the phone book.

17. Press the **Left** arrow key to exit the menu.

ADDING A GROUP ENTRY TO THE PHONE BOOK

The machine can hold up to 20 group dial settings. To add a new group dial number to the phone book:

1. Press the **SETTING** button on the control panel.
2. Using the **Down** arrow key, scroll to **Phone Book** and press **OK**.
3. Using the **Down** arrow key, scroll to **Group No. Book** and press **OK**.
4. Using the arrow keys, scroll to the required entry position and press **OK**.
5. Press **OK** to select **Register**.
6. Press the **Right** arrow key to select **Name**.
7. Using the keypad or arrows keys and the on-screen keypad, type in the name.

NOTE

The maximum length of name is 16 characters.

8. Highlight **Done** and press **OK**.
9. Using the **Down** arrow key, scroll to **Speed Dial** and press the **Right** arrow key.
10. Using the arrow keys, select the speed dial number you wish to assign to the group and press **OK**.
The check box is selected. You can select multiple entries.
11. Press the **Right** arrow key to complete.
12. Press **OK** to confirm.
13. Press **OK** once more to add your entry to the phone book.
14. Press the **Left** arrow key to exit the menu.

DELETING A SPEED DIAL ENTRY FROM THE PHONE BOOK

To delete a speed dial entry from the phone book:

1. Press the **SETTING** button on the control panel.
2. Using the **Down** arrow key, scroll to **Phone Book** and press **OK**.
3. Press **OK** to select **Speed Dial List**.
4. Using the arrow keys, scroll to the required entry position and press **OK**.
5. Using the arrow keys, scroll to **Delete** and press **OK**.
6. At the prompt select **Yes** to continue or select **No** to cancel the operation.
7. Press **OK**.
8. Press the **Left** arrow key to exit the menu.

DELETING A GROUP DIAL ENTRY FROM THE PHONE BOOK

To delete a group dial entry from the phone book:

1. Press the **SETTING** button on the control panel.
2. Using the **Down** arrow key, scroll to **Phone Book** and press **OK**.
3. Using the **Down** arrow key, scroll to **Group No. Book** and press **OK**.
4. Using the arrow keys, scroll to the required entry position and press **OK**.

5. Using the arrow keys, scroll to **Delete** and press **OK**.
6. At the prompt select **Yes** to continue or select **No** to cancel the operation.
7. Press **OK**.
8. Press the **Left** arrow key to exit the menu.

MODIFYING A SPEED DIAL ENTRY

To modify a speed dial entry:

1. Press the **SETTING** button on the control panel.
2. Using the **Down** arrow key, scroll to **Phone Book** and press **OK**.
3. Press **OK** to select **Speed Dial List**.
4. Using the arrow keys, scroll to the required entry position and press **OK**.
5. Press **OK** to select **Edit**.
6. Modify the **Name**, **Fax Number** and/or **Group No.** details as required then press **OK**.
7. Press the **Left** arrow key to exit the menu.

MODIFYING A GROUP DIAL ENTRY

To modify a group dial entry:

1. Press the **SETTING** button on the control panel.
2. Using the **Down** arrow key, scroll to **Phone Book** and press **OK**.
3. Using the **Down** arrow key, scroll to **Group No. Book** and press **OK**.
4. Using the arrow keys, scroll to the required entry position and press **OK**.
5. Press **OK** to select **Edit**.
6. Modify the **Name**, and/or **Speed Dial** details as required then press **OK**.
7. Press the **Left** arrow key to exit the menu.

REGISTERING AN ENTRY FROM RECEPTION OR TRANSMISSION HISTORY

1. Press the **Fax** button on the control panel to prompt the **Fax Mode** screen.
2. Ensure **Fax** is highlighted, then press **OK**.
3. Using the **Down** arrow key, scroll to **Fax History** and press **OK**.
4. Using the arrow keys, highlight **Tx History** or **Rx History** as appropriate and press **OK**.
5. Using the arrow keys, scroll to the required entry and press **OK**.
6. Check the entry contents and then press the **Right** arrow key.
7. Press **OK** to select **Register To Speed Dial**.
8. Using the arrow keys, scroll to the required entry position and press **OK**.
9. Continue the registration process as described in ["Adding a speed dial entry to the phone book" on page 33](#).

The fax number is automatically entered. You do not have to enter it manually.

USER AUTHENTICATION AND ACCESS CONTROL

The user authentication and access control functions allow you to limit the functions available to each user. These functions can help you save toner and paper.

Your machine has the following two methods of user authentication:

- > PIN (personal identification number)
- > User name and password

To control access to the machine, register a PIN or a user name and password for each user in advance. The user must enter the PIN (or the user name and password) to log into the machine or to print from a computer.

NOTE

You can register up to 100 PINs and 100 user name and password sets.

Access control can be applied to the following functions:

- > Copying (Color/Mono)
- > Printing (Color/Mono)
- > Printing from USB Memory
- > Scanning to e-mail
- > Scanning to network PC
- > Scanning to USB memory
- > Faxing (MC361 and MC561 only)
- > Faxing via PC (MC361 and MC561 only)
- > Internet Faxing (MC361 and MC561 only)

The following conditions are required to enable the user authentication and access control functions:

- > Your machine is connected to a network
- > A computer on which Configuration Tool is installed is on the network

PIN AUTHENTICATION

REGISTERING A PIN

Before enabling user authentication and access control, be sure to register a PIN for each user. You must be the administrator to register PINs.

To register a PIN, launch PIN Manager from Configuration Tool.

NOTE

You can also register a PIN from the MFP web page.

ENABLING PIN AUTHENTICATION

You must be the logged on as the administrator to control access to the machine.

1. Press the **SETTING** button on the control panel.
2. Using the **Down** arrow key, scroll to `Admin Setup` and then press **OK**.
3. Using the arrow keys and on-screen keypad, enter the Administrator password. Highlight `Done` and press **OK**.
4. Using the **Down** arrow key, scroll to `Management` and press **OK**.
5. Using the **Down** arrow key, scroll to `System Setup` and press **OK**.
6. Make sure that `Access Control` is selected and press **OK**.
7. Using the arrow keys, scroll to `PIN` and press **OK**.
8. Press the **BACK** button to exit the menu.

OPERATION WHEN PIN AUTHENTICATION IS ENABLED

Logging into the machine

For general users

1. Enter your PIN using the keypad on the control panel.
2. Press **OK**.

If authentication succeeds, the top screen displays.

For the Administrator

1. Enter "**000000**" using the keypad on the control panel.

NOTE

The Administrator PIN is "000000". You cannot change this value.

2. Press **OK**.
3. When the password entry screen displays, enter the administrator password.
4. Using the arrow keys, highlight **Done** and then press **OK**.

If authentication succeeds, the top screen displays.

Logging out of the machine

When you have finished operations, be sure to log out of the machine.

1. Press the **BACK** button or **Left** arrow key until the top screen displays.
2. Press the **RESET/LOGOUT** button on the control panel.

NOTE

After a certain period of time, the machine automatically logs out users.

USER NAME AND PASSWORD AUTHENTICATION

REGISTERING A USER NAME AND PASSWORD

Before enabling user authentication and access control, be sure to register a user name and a password for each user. You must be the administrator to register user names and passwords.

To register a user name and password, launch PIN Manager from Configuration Tool.

NOTE

You can also register a user name and password from the MFP web page.

ENABLING USER NAME AND PASSWORD AUTHENTICATION

You must be the logged on as the administrator to control access to the machine.

1. Press the **SETTING** button on the control panel.
2. Using the **Down** arrow key, scroll to `Admin Setup` and then press **OK**.
3. Using the arrow keys and on-screen keypad, enter the Administrator password. Highlight `Done` and press **OK**.

NOTE

The default password is "aaaaaa".

4. Using the **Down** arrow key, scroll to `Management` and press **OK**.
5. Using the **Down** arrow key, scroll to `System Setup` and press **OK**.
6. Make sure that `Access Control` is selected and press **OK**.
7. Using the arrow keys, scroll to `User/Password` and press **OK**.
8. Using the **Down** arrow key, scroll to `User Authentication Method` and press **OK**.
9. Make sure that `Local` is selected and press **OK**.

NOTE

When you select `LDAP` or `Secure Protocol`, the server settings are necessary. For details, refer to "[Network Menu](#)" on page 112.

10. Press the **BACK** button to exit the menu.

OPERATION WHEN USER NAME AND PASSWORD AUTHENTICATION IS ENABLED

Logging into the machine

1. Make sure that `User Name` is selected and then press the **Right** arrow key.
2. Enter your name.
3. Using the arrow keys, highlight `Done` and then press **OK**.
4. Make sure that `Password` is selected and then press **OK**.
5. Enter your password.
6. Using the arrow keys, highlight `Done` and then press **OK**.
7. At the `Login` screen, press **OK**.

If authentication succeeds, the top screen displays.

Logging out of the machine

When you have finished operations, be sure to log out of the machine.

1. Press the **BACK** button or **Left** arrow key until the top screen displays.
2. Press the **RESET/LOGOUT** button on the control panel.

NOTE

After a certain period of time, the machine automatically logs out users.

OPERATION FROM THE COMPUTER

NOTE

The authentication type specified on the computer overrides the one specified on the machine.

Printing from Windows

NOTE

You cannot use the PCL XPS printer driver for this function.

This procedure uses Windows 7 and NotePad as an example. The procedures and menus may differ depending on the OS you use.

1. Open the file you want to print.
2. From the **File** menu, select **Print**.
3. Choose the printer driver you want in **Select Printer** and click **Preferences**.
4. Select the **Job Options** tab.
5. Click **User Auth**.
6. Select **Enable User Authentication**.
7. Enter the user name in **Username** and the password in **Password**.
Clicking **Use Windows Login** automatically enters your login name on Windows.
8. Click **OK**.
9. Click **OK** and then click **Print**.

Printing from Mac

NOTE

This procedure uses Mac OS X 10.6 as an example. The procedures and menus may differ depending on the OS you use.

1. Open the file you want to print.
2. From the **File** menu, select **Print**.
3. Select your machine's printer driver.
4. Select **User Authentication** from the panel menu under the **Printer** and **Presets** menus.
5. Select **Enable User Authentication**.
6. Enter the user name in **User Name** and the password in **Password**.
7. Click **Print**.

Faxing (Windows only))

NOTE

This procedure uses Windows 7 and NotePad as an example. The procedures and menus may differ depending on the OS you use.

1. Open the file you want to fax.
2. From the **File** menu, select **Print**.
3. Select your machine (fax driver) in **Select Printer** and click **Preferences**.
4. On the **Setup** tab, click **User Auth**.
5. Select **Enable User Authentication**.
6. Enter the user name in **Username** and the password in **Password**.
Clicking **Use Windows Login** automatically enters your login name on Windows.
7. Click **OK**.
8. Click **OK** and then click **Print**.

ADVANCED NETWORK SETTINGS

This chapter explains advanced network settings for your machine.

NETWORK SETTING ITEMS

This section explains the menus available for network settings.

You can check the current network settings by pressing the **SETTING** key and selecting **View Information** then **Network** on the machine control panel. You can also print the setting list.

NOTE

For details on how to print the network setting list, refer to [“Network Information” on page 87](#).

You can change the network settings from the machine’s web page, Configuration Tool, TELNET, and Network Card Setup. For available menus on each utility, refer to the following tables.

TCP/IP

ITEM					DEFAULT VALUE	DESCRIPTION
WEB PAGE	TELNET	CONFIG. TOOL NETWORK SETTING PLUG-IN	NETWORK CARD SETUP			
			(WIN.)	(MAC)		
IP Address Set	IP Address Set	DHCP/ BOOTP	DHCP/ BOOTP	DHCP/ BOOTP	Manual	Specifies whether to request the DHCP/BOOTP server to assign an IP address.
IP Address	IP Address	IP Address	IP Address	IP Address	xxx.xxx.xxx.x xx	Sets an IP address.
Subnet Mask	Subnet Mask	Subnet Mask	Subnet Mask	Subnet Mask	xxx.xxx.xxx.x xx	Sets a subnet mask.
Gateway Address	Gateway Address	Default Gateway Address	Default Gateway Address	Default Gateway Address	0.0.0.0	Sets a gateway address.
DNS Server (Primary)	DNS Server (Pri.)	-	-	-	0.0.0.0	Specifies the IP address of the primary DNS server. Be sure to specify this item when you use a domain name to specify the SMTP/POP/LDAP server.
DNS Server (Second- ary)	DNS Server (Sec.)	-	-	-	0.0.0.0	Specifies the IP address of the secondary DNS server. Be sure to specify this item when you use a domain name to specify the SMTP/POP/LDAP server.
Dynamic DNS	Dynamic DNS	-	-	-	Disable	Specifies whether to register the information to the DNS server when a setting has been changed.

ITEM					DEFAULT VALUE	DESCRIPTION
WEB PAGE	TELNET	CONFIG. TOOL NETWORK SETTING PLUG-IN	NETWORK CARD SETUP			
			(WIN.)	(MAC)		
Domain Name	Domain Name	-	-	-	(NULL)	Sets the domain name the machine belongs to.
WINS Server (Primary)	WINS Server (Pri.)	-	-	-	0.0.0.0	Specifies the name or IP address of the WINS server (for Windows only).
WINS Server (Second- ary)	WINS Server (Sec.)	-	-	-	0.0.0.0	Specifies the name or IP address of the WINS server (for Windows only).
Scope ID	Scope ID	-	-	-	(NULL)	Specifies the Scope ID for WINS. From 1 to 223 characters can be used.
Windows	Windows	-	-	-	Disable	Specifies whether to use the auto-discovery function of Windows.
Macintosh	Macintosh	-	-	-	Enable	Specifies whether to use the auto-discovery function of Macintosh.
Device Name	Printer Name	-	-	-	OKI-(machine name)-(last 6 digits of MAC address)	Specifies the rule of displaying the machine name when the auto-detect function is enabled.
IPv6	IP Version	-	-	-	Disable	Specifies whether to use IPv6.

NETWARE

ITEM					DEFAULT VALUE	DESCRIPTION
WEB PAGE	TELNET	CONFIG. TOOL NETWORK SETTING PLUG-IN	NETWORK CARD SETUP			
			(WIN.)	(MAC)		
Print mode	-	-	-	-	Print Server	Specifies how to use the machine, as a print server, or as a remote printer.
Connection method	NetWare Mode	-	-	-	NDS+ Bindery	Specifies the NetWare priority mode.
Communi- cation protocol	TCP or IPX	-	-	-	IPX	Select IPX or TCP/IP to be used on NetWare.
Print Server Name	Print Server Name	-	-	-	OKI- (machine name)-(last 6 digits of Ethernet address)-PS	Specifies the print server name up to 31 characters. This value must be identical to the one specified in the file server.
Printer Name	PrinterName	-	-	-	OKI- (machine name)-(last 6 digits of Ethernet address)-PR	Specifies the machine name when you use a remote printer. This value must be identical to the one specified in the file server.
Frame Type	Frame Type	-	-	-	Auto	Specifies the frame type the machine uses on Netware.
Bindery Mode	-	-	-	-	Enable	Specifies whether to use the bindery mode. When you access Netware 3.12 or the bindery network of NetWare 6.0, 5.0, or 4.1, enable the bindery mode. When you access NDS of NetWare 6.0, 5.0, or 4.1, disable the bindery mode.
File Server Names	File Server Name #1-8	-	-	-	(NULL)	Specifies the name of the file server up to 47 characters. You can specify up to 8 servers.
Password for File Servers	Password	-	-	-	(NULL)	Sets a password to log in to the file server up to 31 characters. You must specify this item when you set a password on the file server for the machine.
Job Polling Rate	JobPolling Time (Sec.)	-	-	-	4 (seconds)	Sets the interval to access the queue for a print job.

ITEM					DEFAULT VALUE	DESCRIPTION
WEB PAGE	TELNET	CONFIG. TOOL NETWORK SETTING PLUG-IN	NETWORK CARD SETUP			
			(WIN.)	(MAC)		
Tree	NDS Tree	-	-	-	(NULL)	Specifies the NDS tree name up to 31 characters. Specify the tree name to which the file server belongs.
Context	NDS Context	-	-	-	(NULL)	Specifies the NDS context name up to 77 characters. Specify the context name to which the print server belongs.
Job Timeout	Job Timeout (Sec.)	-	-	-	10 (seconds)	Specifies when to free a port after the last print job has been accepted.
Print Server Names	Print Sever Name #1-8	-	-	-	(NULL)	Specifies the name of the print server to access up to 47 characters. You can specify up to 8 servers.

ETHERTALK

ITEM					DEFAULT VALUE	DESCRIPTION
WEB PAGE	TELNET	CONFIG. TOOL NETWORK SETTING PLUG-IN	NETWORK CARD SETUP			
			(WIN.)	(MAC)		
EtherTalk Zone Name	Zone Name	-	-	-	*	Specifies the EtherTalk zone name up to 32 characters.
EtherTalk Printer Name	Printer Name	-	-	-	(machine name)	Specifies the Ethertalk printer name up to 31 characters.

NBT/NetBEUI

ITEM					DEFAULT VALUE	DESCRIPTION
WEB PAGE	TELNET	CONFIG. TOOL NETWORK SETTING PLUG-IN	NETWORK CARD SETUP			
			(WIN.)	(MAC)		
Short Device Name	Short Device Name	-	-	-	(machine name)- (last 6 digits of Ethernet address)	Sets the rule of specifying the name to be identified on NetBIOS over TCP/NetBEUI up to 15 characters. It is displayed on the PrintServer group in Network Computer on Windows.
Workgroup Name	Work group Name	-	-	-	PrintServer	Specifies the work group name to be displayed on Windows network computers up to 15 characters.
Master Browser Setting	Master Browser Setting	-	-	-	Enable	Specifies whether to use master browser.
Comment	Comment	-	-	-	Ethernet- Board OkiLAN 8500e	Sets a comment up to 48 characters. It is displayed when Windows Explorer is in the detailed view.

E-MAIL SEND

ITEM					DEFAULT T VALUE	DESCRIPTION
WEB PAGE	TELNET	CONFIG. TOOL NETWORK SETTING PLUG-IN	NETWORK CARD SETUP			
			(WIN.)	(MAC)		
SMTP Send	SMTP Send	-	-	-	Enable	Specifies whether to use SMTP (E-mail).
SMTP Server	SMTP Server Name	-	-	-	(NULL)	Specifies the SMTP server name. Specify the domain name or IP address. Be sure to configure DNS settings when you enter a domain name.
Device E-mail Address	Device Email Address	-	-	-	(NULL)	Specifies the e-mail address of the machine.
Authenticat ion Method	SMTP Auth- Method	-	-	-	None	Specifies whether to perform SMTP authentication.

ITEM					DEFAULT T VALUE	DESCRIPTION
WEB PAGE	TELNET	CONFIG. TOOL NETWORK SETTING PLUG-IN	NETWORK CARD SETUP			
			(WIN.)	(MAC)		
SMTP Port Number	SMTP Port Number	-	-	-	25	Specifies the SMTP port number.
SMTP UserID	SMTP Server User ID	-	-	-	(NULL)	Sets a user ID for SMTP authentication method.
SMTP Password	SMTP Server Password	-	-	-	(NULL)	Sets a password for SMTP authentication.
SMTP Encryption	SMTP Encryption Algorithm	-	-	-	None	Specifies the method for encrypting the SMTP (E-mail) send protocol.
POP UserID	POP3 Server UserID	-	-	-	(NULL)	Sets a user ID to access the POP server.
POP Password	POP3 Server Password	-	-	-	(NULL)	Sets a password to access the POP server.
POP Encryption Algorithm	POP Encryption Algorithm	-	-	-	None	Specifies the method to encrypt POP communication.
Attached Information Device Model	Attached Info Device Model	-	-	-	Enable	Specifies whether to list the machine model name on an alert e-mail.
Attached Information Network Interface	Attached Info Network Interface	-	-	-	Enable	Specifies whether to list the network interface name on an alert e-mail.
Attached Information Serial Number	Attached Info Serial Number	-	-	-	Enable	Specifies whether to list the machine serial number on an alert e-mail.
Attached Information Asset Number	Attached Info Asset Number	-	-	-	Disable	Specifies whether to list the machine asset number on an alert e-mail.
Attached Information Device Name	Attached Info Device Name	-	-	-	Disable	Specifies whether to list the machine SystemName on an alert e-mail.
Attached Information Location	Attached Info Location	-	-	-	Disable	Specifies whether to list the machine SystemLocation on an alert e-mail.
Attached Information IP Address	Attached Info IP Address	-	-	-	Enable	Specifies whether to list the machine IP address on an alert e-mail.

ITEM					DEFAULT T VALUE	DESCRIPTION
WEB PAGE	TELNET	CONFIG. TOOL NETWORK SETTING PLUG-IN	NETWORK CARD SETUP			
			(WIN.)	(MAC)		
Attached Information MAC Address	Attached Info MAC Address	-	-	-	Disable	Specifies whether to list the machine MAC address on an alert e-mail.
Attached Information Short Device Name	Attached Info Short Device Name	-	-	-	Disable	Specifies whether to list the short product name of the machine on an alert e-mail.
Attached Information Device URL	Attached Info Device URL	-	-	-	Disable	Specifies whether to list the machine URL on an alert e-mail.
Comment	Comment Line 1-4	-	-	-	(NULL)	Sets a comment to add to an alert e-mail. You can enter a maximum of 63 characters in a line. Up to 4 lines can be specified.
Reply-To- Address	Reply-To Address	-	-	-	(NULL)	Specifies the e-mail address used to reply to e-mails. Specify the e-mail address of the network administrator.

E-MAIL RECEIVE

ITEM					DEFAULT T VALUE	DESCRIPTION
WEB PAGE	TELNET	CONFIG. TOOL NETWORK SETTING PLUG-IN	NETWORK CARD SETUP			
			(WIN.)	(MAC)		
Use Protocol	POP or SMTP	-	-	-	Disable	Specifies whether to use e-mail reception function. Select the protocol to use.
POP Server Name	POP3 Server	-	-	-	0.0.0.0	Specifies the POP server name. Enter the domain name or IP address.
POP User ID	POP3 Server UserID	-	-	-	(NULL)	Sets a user ID to access the POP server.
POP Password	POP3 Server Password	-	-	-	(NULL)	Sets a password to access the POP server.
APOP Support	Use APOP	-	-	-	Disable	Specifies whether to use APOP.
POP Port Number	POP port number	-	-	-	110	Specifies the port number to access the POP server.

ITEM					DEFAULT T VALUE	DESCRIPTION
WEB PAGE	TELNET	CONFIG. TOOL NETWORK SETTING PLUG-IN	NETWORK CARD SETUP			
			(WIN.)	(MAC)		
POP Encryption	POP Encryption Algorithm	-	-	-	None	Specifies the method to encrypt POP communication.
POP Receive Interval	MailPolling Time (min)	-	-	-	5 (mins)	Specifies the interval to access the POP server to receive e- mails.
Domain Filter	Domain filter	-	-	-	Disable	Specifies whether to use domain filtering.
Email from the following listed domains	Filter Policy	-	-	-	Accept	Specifies whether to accept or block e-mails from the specified domain.
Domain 1-5	Domain 1-5	-	-	-	(NULL)	Specifies a domain to apply domain filtering.
SMTP Receive Port Number	Port Number	-	-	-	25	Specifies the port number to access the machine via SMTP.

E-MAIL ALERT

ITEM					DEFAULT VALUE	DESCRIPTION
WEB PAGE	TELNET	CONFIG. TOOL NETWORK SETTING PLUG-IN	NETWORK CARD SETUP			
			(WIN.)	(MAC)		
Address 1-5	Email Address 1-5	-	-	-	(NULL)	Specifies the destination e-mail addresses. You can specify up to 5 destinations.
Way of E-mail Alerting	Notify Mode 1-5	-	-	-	Upon occurrence of an event	Specifies when to notify you of an error.
E-mail Alert Interval	Email Alert Interval (Hours) 1-5	-	-	-	24 (Hours)	Specifies the interval of the e-mail alert. Valid only when the periodical alert is specified.
Consumable Warning	Consumable Warning Event 1-5	-	-	-	Immediate	Specifies whether to notify you of a warning on consumables. Valid only when the alert in the event of an error is selected.
Consumable Warning	Consumable Warning Period 1-5	-	-	-	Enable	Specifies whether to notify you of a warning on consumables. Valid only when the periodical alert is selected.

ITEM					DEFAULT VALUE	DESCRIPTION
WEB PAGE	TELNET	CONFIG. TOOL NETWORK SETTING PLUG-IN	NETWORK CARD SETUP			
			(WIN.)	(MAC)		
Consumable Error	Consumable Error Event 1-5	-	-	-	Immediate	Specifies whether to notify you of an error on consumables. Valid only when the alert in the event of an error is selected.
Consumable Error	Consumable Error Period 1-5	-	-	-	Enable	Specifies whether to notify you of an error on consumables. Valid only when the periodical alert is selected.
Mainten- ance Unit Warning	Mainten- ance Unit Warning Event 1-5	-	-	-	2H0M	Specifies whether to notify you of a warning on the maintenance unit. Valid only when the alert in the event of an error is selected.
Mainten- ance Unit Warning	Mainten- ance Unit Warning Period 1-5	-	-	-	Enable	Specifies whether to notify you of a warning on the maintenance unit. Valid only when the periodical alert is selected.
Mainten- ance Unit Error	Mainten- ance Unit Error Event 1-5	-	-	-	Immediate	Specifies whether to notify you of an error on the maintenance unit. Valid only when the alert in the event of an error is selected.
Mainten- ance Unit Error	Maintenanc e Unit Error Period 1-5	-	-	-	Enable	Specifies whether to notify you of an error on the maintenance unit. Valid only when the periodical alert is selected.
Paper Supply Warning	Paper Supply Warning Event 1-5	-	-	-	0H15M	Specifies whether to notify you of a warning on paper. Valid only when the alert in the event of an error is selected.
Paper Supply Warning	Paper Supply Warning Period 1-5	-	-	-	Enable	Specifies whether to notify you of a warning on paper. Valid only when the periodical alert is selected.
Paper Supply Error	Paper Supply Error Event 1-5	-	-	-	Immediate	Specifies whether to notify you of an error on paper. Valid only when the alert in the event of an error is selected.
Paper Supply Error	Paper Supply Error Period 1-5	-	-	-	Enable	Specifies whether to notify you of an error on paper. Valid only when the periodical alert is selected.
Printing Paper Warning	Printing Paper Warning Event 1-5	-	-	-	Disable	Specifies whether to notify you of a warning on paper feed. Valid only when the alert in the event of an error is selected.

ITEM					DEFAULT VALUE	DESCRIPTION
WEB PAGE	TELNET	CONFIG. TOOL NETWORK SETTING PLUG-IN	NETWORK CARD SETUP			
			(WIN.)	(MAC)		
Printing Paper Warning	Printing Paper Warning Period 1-5	-	-	-	Disable	Specifies whether to notify you of a warning on paper feed. Valid only when the periodical alert is selected.
Printing Paper Error	Printing Paper Error Event 1-5	-	-	-	2H0M	Specifies whether to notify you of an error on paper feed. Valid only when the alert in the event of an error is selected.
Printing Paper Error	Printing Paper Error Period 1-5	-	-	-	Enable	Specifies whether to notify you of an error on paper feed. Valid only when the periodical alert is selected.
Storage Device Warning	Storage Device Event 1-5	-	-	-	Disable	Specifies whether to notify you of an error on the storage device. Valid only when the alert in the event of an error is selected.
Storage Device Warning	Storage Device Period 1-5	-	-	-	Enable	Specifies whether to notify you of an error on the storage device. Valid only when the periodical alert is selected.
Print Result Warning	Print Result Warning Event 1-5	-	-	-	Disable	Specifies whether to notify you of a warning on an error affecting print results. Valid only when the alert in the event of an error is selected.
Print Result Warning	Print Result Warning Period 1-5	-	-	-	Enable	Specifies whether to notify you of a warning on an error affecting print results. Valid only when the periodical alert is selected.
Print Result Error	Print Result Error Event 1-5	-	-	-	2H0M	Specifies whether to notify you of an error affecting print results. Valid only when the alert in the event of an error is selected.
Print Result Error	Print Result Error Period 1-5	-	-	-	Enable	Specifies whether to notify you of an error affecting print results. Valid only when the periodical alert is selected.
Interface Warning	Interface Warning Event 1-5	-	-	-	Disable	Specifies whether to notify you of a warning on the interface. Valid only when the alert in the event of an error is selected.
Interface Warning	Interface Warning Period 1-5	-	-	-	Disable	Specifies whether to notify you of a warning on the interface. Valid only when the periodical alert is selected.

ITEM					DEFAULT VALUE	DESCRIPTION
WEB PAGE	TELNET	CONFIG. TOOL NETWORK SETTING PLUG-IN	NETWORK CARD SETUP			
			(WIN.)	(MAC)		
Interface Error	Interface Error Event 1-5	-	-	-	2H0M	Specifies whether to notify you of an error on the interface. Valid only when the alert in the event of an error is selected.
Interface Error	Interface Error Period 1-5	-	-	-	Enable	Specifies whether to notify you of an error on the interface. Valid only when the periodical alert is selected.
Security Warning	Security Warning Event 1-5	-	-	-	Disable	Specifies whether to notify you of a warning on the security function. Valid only when the alert in the event of an error is selected.
Security Warning	Security Warning Period 1-5	-	-	-	Disable	Specifies whether to notify you of a warning on the security function. Valid only when the periodical alert is selected.
Scanner Warning	Scanner Warning Event 1-5	-	-	-	Disable	Specifies whether to notify you of a warning on the scanner. Valid only when the alert in the event of an error is selected.
Scanner Warning	Scanner Warning Period 1-5	-	-	-	Disable	Specifies whether to notify you of a warning on the scanner. Valid only when the periodical alert is selected.
Scanner Error	Scanner Error Event 1-5	-	-	-	Disable	Specifies whether to notify you of an error on the scanner. Valid only when the alert in the event of an error is selected.
Scanner Error	Scanner Error Period 1-5	-	-	-	Disable	Specifies whether to notify you of an error on the scanner. Valid only when the periodical alert is selected.
Fax Warning ^a	FAX Warning Event 1-5	-	-	-	Disable	Specifies whether to notify you of a warning on the fax function. Valid only when the alert in the event of an error is selected.
Fax Warning ^a	FAX Warning Period 1-5	-	-	-	Disable	Specifies whether to notify you of a warning on the fax function. Valid only when the periodical alert is selected.
Fax Error ^a	FAX Error Event 1-5	-	-	-	Disable	Specifies whether to notify you of an error on the fax function. Valid only when the alert in the event of an error is selected.

ITEM					DEFAULT VALUE	DESCRIPTION
WEB PAGE	TELNET	CONFIG. TOOL NETWORK SETTING PLUG-IN	NETWORK CARD SETUP			
			(WIN.)	(MAC)		
Fax Error ^a	FAX Error Period 1-5	-	-	-	Disable	Specifies whether to notify you of an error on the fax function. Valid only when the periodical alert is selected.
Other Error	Other Error Event 1-5	-	-	-	2H0M	Specifies whether to notify you of other errors. Valid only when the alert in the event of an error is selected.
Other Error	Other Error Period 1-5	-	-	-	Enable	Specifies whether to notify you of other errors. Valid only when the periodical alert is selected.

a. MC361 and MC561 only.

SNMP

ITEM					DEFAULT VALUE	DESCRIPTION
WEB PAGE	TELNET	CONFIG. NETWORK SETTING PLUG-IN	NETWORK CARD SETUP			
			(WIN.)	(MAC)		
Contact to Administra tor	Contact to Admin	-	-	-	(NULL)	Specifies the contact information of the system administrator up to 225 characters.
Printer Name	Printer Name	-	-	-	OKI- (machine name)-(last 6 digits of MAC address)	Sets the machine name up to 31 characters.
Printer Location	Printer Location	-	-	-	(NULL)	Sets the machine location up to 255 characters.
Printer Number	Printer Asset Number	-	-	-	(NULL)	Sets the arbitrary number to manage your machine up to 8 characters.
SNMP Mode	SNMP Version	-	-	-	SNMPv3+v1	Specifies the SNMP version.
User Name	User Name	-	-	-	root	Sets the user name in SNMPv3 up to 32 characters.
Authentica tion Settings Pass- phrase	Auth Pass- phrase	-	-	-	(NULL)	Sets the password to create an authentication key for SNMPv3 Packet Authentication. From 8 to 32 characters can be used.

ITEM					DEFAULT VALUE	DESCRIPTION
WEB PAGE	TELNET	CONFIG. NETWORK SETTING PLUG-IN	NETWORK CARD SETUP			
			(WIN.)	(MAC)		
-	Auth Key	-	-	-	(NULL)	Sets the authentication key for SNMPv3 packet authentication in HEX code. Maximum number of characters differs depending on the algorithm you select.
Authentica tion Settings Algorithm	Auth Algorithm	-	-	-	MD5	Specifies the algorithm for SNMPv3 packet authentication.
Privacy Settings Pass- phrase	Privacy Pass- phrase	-	-	-	(NULL)	Sets the password to create a privacy key for SNMPv3 packet encryption. From 8 to 32 characters can be used.
-	Privacy Key	-	-	-	(NULL)	Sets the authentication key for SNMPv3 packet encryption in HEX code. 16 octets (HEX code 32 characters) can be used.
Privacy Settings Algorithm	Privacy Algorithm	-	-	-	DES	Specifies the algorithm for SNMPv3 packet encryption. You cannot change the value.
New SNMP Read Commun- ity	Read Community	-	-	-	public	Sets the read community for SNMPv1 up to 15 characters.
New SNMP Write Commun- ity	Write Community	-	-	-	public	Sets the write community for SNMPv1 up to 15 characters.

PRINTER TRAP

ITEM					DEFAULT VALUE	DESCRIPTION
WEB PAGE	TELNET	CONFIG. TOOL NETWORK SETTING PLUG-IN	NETWORK CARD SETUP			
			(WIN.)	(MAC)		
Printer Trap Communi- ty Name	Prn-Trap Communi- ty	-	-	-	public	Sets a community name for a printer trap up to 31 characters.
Address 1-5	TCP #1-5 Trap Address	-	-	-	0.0.0.0	Specifies a trap destination in TCP/IP. You can specify up to 5 destinations.
Trap Enable 1-5	TCP #1-5 Trap Enable	-	-	-	Disable	Specifies whether to use a printer trap in TCP #1-5.

ITEM					DEFAULT VALUE	DESCRIPTION
WEB PAGE	TELNET	CONFIG. TOOL NETWORK SETTING PLUG-IN	NETWORK CARD SETUP			
			(WIN.)	(MAC)		
Printer Reboot 1-5	TCP #1-5 Printer Reboot Trap	-	-	-	Disable	Specifies whether to send an SNMP message when the machine has rebooted.
Receive Illegal Packet 1-5	TCP #1-5 Receive Illegal Trap	-	-	-	Disable	Specifies whether to use a trap when a community name other than the one set in Printer Trap Community Name is used to access the machine.
Online 1-5	TCP #1-5 Online Trap	-	-	-	Disable	Specifies whether to send an SNMP message every time the machine comes online.
Offline 1-5	TCP #1-5 Offline Trap	-	-	-	Disable	Specifies whether to send an SNMP message every time the machine goes offline.
Paper Out 1-5	TCP #1-5 Paper Out Trap	-	-	-	Disable	Specifies whether to send an SNMP message when the machine runs out of paper.
Paper Jam 1-5	TCP #1-5 Paper Jam Trap	-	-	-	Disable	Specifies whether to send an SNMP message when the paper jams.
Cover Open 1-5	TCP #1-5 Cover Open Trap	-	-	-	Disable	Specifies whether to send an SNMP message every time the machine’s cover opens.
Printer Error 1-5	TCP #1-5 Printer Error Trap	-	-	-	Disable	Specifies whether to send an SNMP message when an error occurs.
IPX	IPX Trap Address/ Net	-	-	-	00000000: 000000000 000	Specifies a trap destination in IPX. Specify the value as “(network address):(node address)”. You can specify only one address.
IPX Trap Enable	IPX Trap Enable	-	-	-	Disable	Specifies whether to use a printer trap in IPX.
IPX Printer Reboot	-	-	-	-	Disable	Specifies whether to send an SNMP message when the machine has rebooted.
IPX Receive Illegal Packet	-	-	-	-	Disable	Specifies whether to use a trap when a community name other than the one set in Printer Trap Community Name is used to access the machine.
IPX Online	IPX Online Trap	-	-	-	Disable	Specifies whether to send an SNMP message every time the machine comes online.
IPX Offline	IPX Offline Trap	-	-	-	Disable	Specifies whether to send an SNMP message every time the machine goes offline.

ITEM					DEFAULT VALUE	DESCRIPTION
WEB PAGE	TELNET	CONFIG. TOOL NETWORK SETTING PLUG-IN	NETWORK CARD SETUP			
			(WIN.)	(MAC)		
IPX Paper Out	IPX Paper Out Trap	-	-	-	Disable	Specifies whether to send an SNMP message when the machine runs out of paper.
IPX Paper Jam	IPX Paper Jam Trap	-	-	-	Disable	Specifies whether to send an SNMP message when the paper jams.
IPX Cover Open	IPX Cover Open Trap	-	-	-	Disable	Specifies whether to send an SNMP message every time the machine’s cover opens.
IPX Printer Error	IPX Printer Error Trap	-	-	-	Disable	Specifies whether to send an SNMP message when an error occurs.

IPP

ITEM					DEFAULT VALUE	DESCRIPTION
WEB PAGE	TELNET	CONFIG. TOOL NETWORK SETTING PLUG-IN	NETWORK CARD SETUP			
			(WIN.)	(MAC)		
IPP	-	-	-	-	Disable	Specifies whether to use IPP.
Message from admin- istrator	-	-	-	-	(NULL)	Enter a message according to the language selected in Charset and Language .
Charset	-	-	-	-	UTF-8	Specifies a character set to use when submitting settings to the machine.
Language	-	-	-	-	EN-US	Specifies the language used in the settings containing text strings.
Authentic ation	-	-	-	-	NONE	Specifies whether to use authentication when performing IPP printing.
User Name 1-50	-	-	-	-	(NULL)	If you select BASIC in Authentication , specify a user name up to 63 characters.
Password 1-50	-	-	-	-	(NULL)	If you select BASIC in Authentication , specify a password up to 16 characters.

WINDOWS RALLY

ITEM					DEFAULT VALUE	DESCRIPTION
WEB PAGE	TELNET	CONFIG.T OOL NETWORK SETTING PLUG-IN	NETWORK CARD SETUP			
			(WIN.)	(MAC)		
WSD Print	WSD Print	-	-	-	Enable	Specifies whether to use WSD Print.
LLTD	LLTD	-	-	-	Enable	Specifies whether to use LLTD.

IEEE802.1X

ITEM					DEFAULT VALUE	DESCRIPTION
WEB PAGE	TELNET	CONFIG. TOOL NETWORK SETTING PLUG-IN	NETWORK CARD SETUP			
			(WIN.)	(MAC)		
IEEE802.1X	802.1X	-	-	-	Disable	Specifies whether to use IEEE802.1X.
EAP Type	EAP Type	-	-	-	EAP-TLS	Specifies the EAP method.
EAP User	EAP User	-	-	-	eapuser	Specifies the user name to be used for EAP up to 64 characters.
EAP Password	EAP Password	-	-	-	(NULL)	Specifies the password to be used for an EAP user up to 64 characters. Valid only when PEAP is selected in EAP Type .
Client Certificate Setting	Use SSL. Certificate	-	-	-	(NULL)	Specifies whether to use an SSL/TLS certificate to IEEE802.1X authentication. It is unavailable when no SSL/TLS certificate is installed. Valid only when EAP-TLS is selected.
CA Certification Setting	Authenticate Server	-	-	-	Authenticate Server	Specifies whether to authenticate a certificate from the RADIUS server by a CA certificate.
-	EAP retry	-	-	-	3	Specifies the number of retries of IEEE802.1X authentication.
-	EAP timeout	-	-	-	40	Specifies the timeout value to wait for the server response during IEEE802.1X authentication.

SECURE PROTOCOL SERVER (KERBEROS)

ITEM					DEFAULT VALUE	DESCRIPTION
WEB PAGE	TELNET	CONFIG. TOOL NETWORK SETTING PLUG-IN	NETWORK CARD SETUP			
			(WIN.)	(MAC)		
Domain	Realm Name	-	-	-	(NULL)	Specifies the realm name for Kerberos authentication.

LDAP

ITEM					DEFAULT VALUE	DESCRIPTION
WEB PAGE	TELNET	CONFIG. TOOL NETWORK SETTING PLUG-IN	NETWORK CARD SETUP			
			(WIN.)	(MAC)		
LDAP Server	LDAP Server	-	-	-	(NULL)	Specifies the LDAP server name. Enter the domain name or IP address.
Port Number	LDAP Port Number	-	-	-	389	Specifies the port number of the LDAP server.
Timeout	LDAP Timeout	-	-	-	30	Specifies the timeout value to wait for the LDAP server response.
Max. Entries	Max Entry	-	-	-	100	Specifies the maximum search results.
Search Root	Search Root	-	-	-	(NULL)	Specifies where to search (BaseDN) in LDAP search.
User Name 1	User Name 1	-	-	-	cn	Specifies the attribute name searched for as the user name.
User Name 2	User Name 2	-	-	-	sn	
User Name 3	User Name 3	-	-	-	givenName	
Mail Address	Mail Address	-	-	-	mail	Specifies the attribute name searched for as the e-mail address.
Additional Filter	Additional Filter	-	-	-	(NULL)	Specifies additional filters for LDAP search.
Method	Authentica tion Method	-	-	-	Anonymous	Specifies the authentication method for LDAP server.
User ID	Authentica tion User ID	-	-	-	(NULL)	Sets a user ID to access the LDAP server.

ITEM					DEFAULT VALUE	DESCRIPTION
WEB PAGE	TELNET	CONFIG. TOOL NETWORK SETTING PLUG-IN	NETWORK CARD SETUP			
			(WIN.)	(MAC)		
Password	Authentica tion User Password	-	-	-	(NULL)	Sets a password to access the LDAP server.
Encryption	Encryption Algorithm	-	-	-	None	Specifies the method to encrypt LDAP communication.

MAIL SERVER

ITEM					DEFAULT VALUE	DESCRIPTION
WEB PAGE	TELNET	CONFIG. TOOL NETWORK SETTING PLUG-IN	NETWORK CARD SETUP			
			(WIN.)	(MAC)		
SMTP Server	SMTP Server Name	-	-	-	(NULL)	Specifies the SMTP server name. Specify the domain name or IP address. Be sure to configure DNS settings when you enter a domain name.
SMTP Port	SMTP Port Number	-	-	-	25	Specifies the SMTP port number.
SMTP Encryption	SMTP Encryption Algorithm	-	-	-	None	Specifies the method for encrypting the SMTP (E-mail) send protocol.
POP3 Server	POP3 Server	-	-	-	(NULL)	Specifies the POP server name. Enter the domain name or IP address.
POP3 Port	POP port number	-	-	-	110	Specifies the port number to access the POP server.
POP Encryption	POP Encryption Algorithm	-	-	-	None	Specifies the method to encrypt POP communication.
Authentica tion method	SMTP Auth	-	-	-	None	Specifies whether to perform SMTP authentication.
SMTP UserID	User ID	-	-	-	(NULL)	Sets a user ID for SMTP authentication method.
SMTP Password	User Password	-	-	-	(NULL)	Sets a password for SMTP authentication.
POP UserID	POP3 Server UserID	-	-	-	(NULL)	Sets a user ID to access the POP server.
POP Password	POP3 Server Password	-	-	-	(NULL)	Sets a password to access the POP server.

SECURITY

ITEM					DEFAULT T VALUE	DESCRIPTION
WEB PAGE	TELNET	CONFIG. TOOL NETWORK SETTING PLUG-IN	NETWORK CARD SETUP			
			(WIN.)	(MAC)		
-	TCP/IP	-	-	-	Enable	Specifies whether to use TCP/IP.
NetBEUI	NetBEUI	-	-	-	Disable	Specifies whether to use NetBEUI.
NetBIOS over TCP	NetBIOS over TCP	-	-	-	Enable	Specifies whether to use NetBIOS over TCP.
NetWare	NetWare	-	-	-	Disable	Specifies whether to use NetWare.
EtherTalk	EtherTalk	-	-	-	Disable	Specifies whether to use EtherTalk.
Web (Port No.: 80)	Web (Default Port 80)	Device Settings (Web)-Enable	Printer Web Page -Enable	Web Page Settings	Enable	Specifies whether to use the web page to access the machine.
Web	Web (IPP)	-	-	-	80	Specifies the port number to access the web page of the machine.
IPP (Port No.: 631)	IPP (Default Port 631)	-	-	-	Disable	Specifies whether to use IPP.
Telnet	Telnet	-	-	-	Disable	Specifies whether to use TELNET to access the machine.
FTP	FTP	-	-	-	Disable	Specifies whether to use FTP to access the machine.
SNMP	SNMP	-	-	-	Enable	Specifies whether to use SNMP to access the machine.
POP	POP (E-Mail)	-	-	-	Disable	Specifies whether to use POP3.
POP	POP	-	-	-	110	Specifies the port number for POP3.
SNTP	SNTP	-	-	-	Disable	Specifies whether to use SNTP.
Local Ports	Local Ports	-	-	-	Enable	Specifies whether to use a unique protocol.
-	SMTP (E-Mail)	-	-	-	Enable	Specifies whether to use SMTP send.
SMTP Send Port Number	SMTP Send	-	-	-	25	Specifies the port number for SMTP send.
SMTP Receive Port Number	SMTP Receive	-	-	-	25	Specifies the port number for SMTP receive.

ITEM					DEFAULT T VALUE	DESCRIPTION
WEB PAGE	TELNET	CONFIG. TOOL NETWORK SETTING PLUG-IN	NETWORK CARD SETUP			
			(WIN.)	(MAC)		
Network Password Configur- ation	Password	Change Password	Change Password	Change Password	Last 6 digits of MAC address	Sets a new administrator password up to 15 characters. The password is case-sensitive. This password is used only when you change settings from the utilities. The administrator password set in the machine cannot be changed from this item.

IP FILTERING

ITEM					DEFAULT VALUE	DESCRIPTION
WEB PAGE	TELNET	CONFIG. TOOL NETWORK SETTING PLUG-IN	NETWORK CARD SETUP			
			(WIN.)	(MAC)		
IP Filtering	IP Filtering	-	-	-	Disable	Specifies whether to use IP filtering. Be sure to configure the following settings of this category when you enable IP filtering. If you do not, you cannot access the machine via TCP/IP at all.
Start Address 1-10	Start Address # 1-10	-	-	-	0.0.0.0	Specifies IP addresses which are allowed to access the machine. You can specify an individual address or an address range.
End Address 1-10	End Address # 1-10	-	-	-	0.0.0.0	
Printing 1-10	IP Address Range # 1- 10 Printing	-	-	-	Disable	Specifies whether to allow print jobs from specified IP addresses.
Config 1-10	IP Address Range # 1- 10 Configur- ation	-	-	-	Disable	Specifies whether to allow the configuration from specified IP addresses.
Administra tor's IP Address setting	Admin IP Address	-	-	-	0.0.0.0	Specifies the administrator IP address automatically. Only this address can always access the machine. When the administrator accesses the machine via a proxy server, all access via the proxy server is allowed.

MAC ADDRESS FILTERING

ITEM					DEFAULT VALUE	DESCRIPTION
WEB PAGE	TELNET	CONFIG. TOOL NETWORK SETTING PLUG-IN	NETWORK CARD SETUP			
			(WIN.)	(MAC)		
MAC Address Filtering	MAC Address Filtering	-	-	-	Disable	Specifies whether to use MAC address filtering. This function uses Ethernet addresses for filtering. Be sure to configure the following settings of this category when you enable MAC address filtering. If not, you cannot access the machine via a network at all.
Communic ation from the following MAC Addresses	MAC Address Access	-	-	-	Accept	Specifies whether to accept or block the access from specified MAC addresses.
MAC Address 1-50	MAC Address # 1-50	-	-	-	00:00:00:0 0:00:00	Specifies MAC addresses to which the filtering is applied.
Administra tor's MAC Address setting	Admin MAC Address	-	-	-	00:00:00:0 0:00:00	Specifies the administrator MAC address automatically. Only this address can always access the machine. When the administrator accesses the machine via a proxy server, all access via the proxy server is allowed.

SSL/TLS

ITEM					DEFAULT VALUE	DESCRIPTION
WEB PAGE	TELNET	CONFIG. TOOL NETWORK SETTING PLUG-IN	NETWORK CARD SETUP			
			(WIN.)	(MAC)		
SSL/TLS	Cipher (SSL/TLS)	-	-	-	OFF	Specifies whether to encrypt SSL/TLS communication.
Cipher Strength	Cipher Strength	-	-	-	Standard	Specifies the strength of the encryption.
HTTP/IPP Receive	HTTP/IPP	-	-	-	OFF	Specifies whether to encrypt reception via HTTP/IPP.
HTTP/IPP Receive Cipher Strength	HTTP/IPP Cipher Strength	-	-	-	Standard	Specifies the strength of the encryption of reception via HTTP/IPP.
FTP Receive	FTP Receive	-	-	-	OFF	Specifies whether to encrypt reception via FTP.

ITEM					DEFAULT VALUE	DESCRIPTION
WEB PAGE	TELNET	CONFIG. TOOL NETWORK SETTING PLUG-IN	NETWORK CARD SETUP			
			(WIN.)	(MAC)		
FTP Receive Cipher Strength	FTP Receive Cipher Strength	-	-	-	Standard	Specifies the strength of the encryption of reception via FTP.
SMTP Receive	SMTP Receive	-	-	-	OFF	Specifies whether to encrypt reception via SMTP.
SMTP Receive Cipher Strength	SMTP Receive Cipher Strength	-	-	-	Standard	Specifies the strength of the encryption of reception via SMTP.
Select Certificate type	-	-	-	-	Using self- signed Certificate	Creates a self-signed certificate. And also creates a CSR to send to a certificate authority and installs a certificate issued by it.
Common Name	-	-	-	-	(Machine's IP Address)	The machine's IP address is specified when you create a self-signed certificate.
Organizati on	-	-	-	-	(NULL)	Specifies the official organization name you belong to up to 64 characters.
Organizati onal Unit	-	-	-	-	(NULL)	Specifies the sub-group name such as a branch you belong to up to 64 characters.
Locality	-	-	-	-	(NULL)	Specifies the country or region name you are in up to 128 characters.
State/ Province	-	-	-	-	(NULL)	Specifies the state or province name you are in up to 128 characters.
Country/ Region	-	-	-	-	(NULL)	Specifies the country or region code in 2 characters.
Key Exchange method	-	-	-	-	RSA	Specifies the key method for encrypted communication.
Key size	-	-	-	-	1024bit	Specifies the key size for encrypted communication.

IPSec

ITEM					DEFAULT VALUE	DESCRIPTION
WEB PAGE	TELNET	CONFIG. TOOL NETWORK SETTING PLUG-IN	NETWORK CARD SETUP			
			(WIN.)	(MAC)		
IPSec	IPSec	-	-	-	Disable	Specifies whether to use IPSec.
IP Address 1-50	-	-	-	-	0.0.0.0	Specifies the host allowed to communicate in IPSec.
IKE Encryption Algorithm	-	-	-	-	3DES-CBC	Specifies the IKE encryption method.
IKE Hash Algorithm	-	-	-	-	SHA-1	Specifies the IKE Hash method.
Diffie- Hellman Group	-	-	-	-	Group2	Specifies the Diffie-Hellman group for "Phrase 1 Proposal".
LifeTime	-	-	-	-	28800 (seconds)	Specifies the life time for "ISAKMP SA".
Pre- Shared Key	-	-	-	-	(NULL)	Specifies the pre-shared key.
Key PFS	-	-	-	-	NOPFS	Specifies whether to use Key PFS (Perfect Forward Secrecy).
Key PFS Diffie- Hellman Group	-	-	-	-	None	Specifies the Diffie-Hellman group for Key PFS.
ESP	-	-	-	-	Enable	Specifies whether to use ESP (Encapsulating Security Payload).
ESP Encryption Algorithm	-	-	-	-	3DES-CBC	Specifies the encryption algorithm for ESP.
ESP Authentica tion Algorithm	-	-	-	-	SHA-1	Specifies the authentication algorithm for ESP.
AH	-	-	-	-	Enable	Specifies whether to use AH (Authentication Header).
AH Authentica tion Algorithm	-	-	-	-	SHA-1	Specifies the authentication algorithm for AH.
LifeTime	-	-	-	-	3600 (seconds)	Specifies the life time for "IPSec SA".

MAINTENANCE

ITEM					DEFAULT VALUE	DESCRIPTION
WEB PAGE	TELNET	CONFIG. TOOL NETWORK SETTING PLUG-IN	NETWORK CARD SETUP			
			(WIN.)	(MAC)		
Reset Network Card	Reset Network Card	-	-	-	Disable	Select to reset Network Card.
Reset Network Card to Factory Defaults	Reset Network Card to Factory Defaults	-	-	-	Disable	Select to restore the factory default settings.
LAN Scale Setting	LAN Scale Setting	-	-	-	Normal	Use the default value. SMALL is recommended only when you use a small LAN to which a few computers are connected.
Network PS- Protocol	-	-	-	-	RAW	Specifies the format of PostScript data for the network port.
HEX Dump	HEX Dump Mode	-	-	-	NO	Specifies whether to show the received print data in hexadecimal number. Restarting the machine disables this mode.
HUB Link Setting	HUB Link Setting	-	-	-	AUTO NEGOTIAT- ION	Specifies the speed and method of communication between the hub and the machine.

TIME SETUP (SNTP SETTINGS)

ITEM					DEFAULT VALUE	DESCRIPTION
WEB PAGE	TELNET	CONFIG. TOOL NETWORK SETTING PLUG-IN	NETWORK CARD SETUP			
			(WIN.)	(MAC)		
Time Setup	-	-	-	-	Manual	Specifies how to set date and time, manually or automatically.
SNTP Server (Primary)	NTP Server (Pri.)	-	-	-	(NULL)	Specifies the IP address of the primary NTP server to get the current time.
SNTP Server (Second- ary)	NTP Server (Sec.)	-	-	-	(NULL)	Specifies the IP address of the secondary NTP server to get the current time.

ITEM					DEFAULT VALUE	DESCRIPTION
WEB PAGE	TELNET	CONFIG. TOOL NETWORK SETTING PLUG-IN	NETWORK CARD SETUP			
			(WIN.)	(MAC)		
Adjust Interval	Adjust Interval	-	-	-	1 (hour)	Specifies how often the machine should adjust the time.
Time Zone	Local Time Zone	-	-	-	00:00	Sets the time lag between GMT and your local time.
Set Daylight Saving	Daylight Saving	-	-	-	OFF	Sets daylight saving time.

WEB PRINTING

ITEM					DEFAULT VALUE	DESCRIPTION
WEB PAGE	TELNET	CONFIG. TOOL NETWORK SETTING PLUG-IN	NETWORK CARD SETUP			
			(WIN.)	(MAC)		
Paper tray	-	-	-	-	Tray 1	Specifies the tray to be used for print jobs.
Copies	-	-	-	-	1	Specifies the number of copies.
Collate	-	-	-	-	Enable	Specifies whether to collate the output.
Fit to page	-	-	-	-	Enable	Specifies whether to fit the document size to the paper size.
Duplex printing	-	-	-	-	None	Specifies whether to and how to bind a duplex job.
Page Select	-	-	-	-	Disable	Specifies the pages to be printed.
PDF Password	-	-	-	-	Disable	Select this item and enter the password necessary when you print an encrypted PDF file.

CHANGING NETWORK SETTINGS FROM THE WEB PAGE

This section explains how to change the network settings from the machine's web page. This function is available on Windows and Mac.

To access the machine's web page, your computer must meet the following conditions:

- > TCP/IP is enabled
- > Microsoft Internet Explorer 6 or later, Safari 3.0 or later, or Firefox 3.0 or later is installed
- > Be sure that the security setting for a web browser is set to the middle level or cookies are allowed.
- > To enter the **Admin Setup** menu, the administrator password is necessary. The default password is "**aaaaaa**".

NOTE

Some of the following settings can be performed on other utilities. For details, "[Network setting items](#)" on page 42.

ENCRYPTING COMMUNICATION BY SSL/TLS

You can encrypt the communication between your computer and the machine.

The communication is encrypted by SSL/TLS when you change the machine settings from the web page, perform the IPP printing, direct print, or LDAP search, and print data received via SMTP or FTP.

Creating a certificate

You can create a certificate on the web page. The following two certificates are available:

- > A self-signed certificate
- > A certificate created by a certificate authority

NOTE

If you change the machine IP address after you create a certificate, the certificate becomes invalid. Be sure not to change the machine's IP address after creating a certificate.

1. Access the machine's web page and log in as the administrator.
2. Select **Admin Setup**.
3. Select **Network > Security > SSL/TLS**.
4. Follow the on-screen instructions to specify the detailed settings.

NOTE

*The machine's IP address is set to **Common Name**.*

5. Click **OK**.
6. Check the settings and click **OK**.
7. If you are creating a self-signed certificate, go to "[Enabling encryption](#)" on page 68 to enable encryption.
If you are getting a certificate created by a certificate authority, go to step 8.
8. Follow the on-screen instructions to send a CSR to a certificate authority.

9. Click **Export Certificate**.
10. Perform steps 1 to 3 in "Creating a certificate" on page 67 to enter the encryption screen.
11. Follow the on-screen instructions to install a certificate from the certificate authority.
12. Click **Submit**.
13. Go to "Enabling encryption" on page 68 to enable encryption.

Enabling encryption

After you creating a certificate, perform the following procedure to enable encryption.

When you enable encryption, the communication is encrypted the next time you change the settings from the web page.

1. Access the machine's web page and log in as the administrator.
2. Select **Admin Setup**.
3. Select **Network > Security > Protocol ON/OFF**.
4. Select **Enable** for the desired protocol.
5. Click **Submit**.

Launching the web page

1. Launch a web browser.
2. Type the IP address of the MFP in the URL field of your browser and then press **Enter**. For example **http://10.18.207.102**



IPP PRINTING (WINDOWS ONLY)

IPP printing allows you to transmit your print job data from your computer to the machine via the Internet.

NOTE

The following OSs are supported; Windows 7, Windows Server 2008 R2, Windows Server 2008, Windows Vista, Windows Server 2003, Windows XP, and Windows 2000.

This procedure uses Windows 7 as an example. The procedures and menus may differ depending on the OS you use.

Enabling IPP Printing

IPP printing is disabled by factory default. To perform IPP printing, enable IPP first.

1. Access the machine's web page and log in as the administrator.
2. Select **Admin Setup**.
3. Select **Network > IPP**.
4. Select **Enable**.
5. Click **Submit**.

Setting up your machine as an IPP printer

Add your machine as an IPP printer to your computer.

1. Click **Start** and select **Devices and Printers > Add a printer**.
2. Select **Add a network, wireless or Bluetooth printer** on the **Add Printer** wizard.
3. In the list of available printers, select **The printer that I want isn't listed**.
4. Choose **Select a shared printer by name**.
5. Enter "**https://your machine IP address/ipp**" or "**https://your machine IP address/ipp/lp**" and then click **Next**.
6. Click **Have Disk**.
7. Insert the DVD that was supplied with your machine into the DVD-ROM drive.
8. Enter the following value in **Copy from**:
 - > For PCL driver, "**D:\Drivers\ENU\PCL**".
 - > For PS driver, "**D:\Drivers\ENU\PS**".
 - > For PCL XPS driver, "**D:\Drivers\ENU\XPS**".

NOTE

The values above are the example of when the DVD-ROM drive is set to the D drive.

9. Click **OK**.
10. Select the desired printer and click **OK**.
11. Select **Yes** in **Use this printer as default** and click **Next**.
12. If the **Share this printer** wizard appears, select **Do not share** and then click **Next**.
13. Select **No** in **Print test page?** and click **Next**.
14. Click **Finish**.

15. On the **Hardware Install** screen, click **Continue**.
16. When the installation finishes, print a test page.

Performing IPP printing

NOTE

The following procedure is explained using NotePad as an example. The procedures and menus may differ depending on the application you use.

1. Open an application file.
2. From the **File** menu, select **Print**.
3. From **Select Printer**, select the created IPP printer and then click **Print**.

ENCRYPTING COMMUNICATION BY IPSec

You can encrypt the communication between your computer and the machine.

The communication is encrypted by IPSec. When IPSec is enabled, encryption is applied to all the applications using the IP protocols.

You can specify up to 50 hosts by their IP addresses. When a host that is not registered tries to access the machine, it is rejected. When you try to access a host that is not registered, it is invalid.

You must have a pre-shared key in advance.

Configuring your machine

Be sure to configure your machine first from the web page to enable IPSec.

NOTE

- > When you enable IPSec, the communication to and from a host that is not specified in this procedure is rejected.
 - > Be sure to memorize the values specified in this procedure. They are necessary when you configure the IPSec setting on your computer.
-

1. Access the machine's web page and log in as the administrator.
 2. Select **Admin Setup**.
 3. Select **Network > Security > IPSec**.
 4. Follow the on-screen instructions to specify the detailed settings.
-

NOTE

Either **ESP** or **AH** must be enabled in the configuration for "Phase2 Proposal".

5. Click **Submit**.

The network system reboots to enable the new settings.

NOTE

If you fail to set up IPSec due to the mismatch of the specified parameter, you cannot access the web page. In this case, disable IPSec from the control panel of the machine or initialize the network settings.

Configuring your computer

Be sure to configure your machine in advance before configuring your computer.

NOTE

This procedure uses Windows 7 as an example. The procedures and menus may differ depending on the OS you use.

1. Click **Start** and select **Control Panel > Administrative Tools**.
2. Double-click **Local Security Policy**.
3. On the **Local Security Policy** window, click **IP Security Policies on Local Computer**.
4. From the **Action** menu, select **Create IP Security Policy**.
5. On the **IP Security Policy Wizard**, click **Next**.

6. Enter a **Name** and a **Description** and then click **Next**.
7. Clear the **Activate the default response rule (earlier versions of Windows only)** check box and then click **Next**.
8. Select **Edit properties** and then click **Finish**.
9. On the IP security policy properties window, select the **General** tab.
10. Click **Settings**.
11. On the **Key Exchange Settings** window, enter the value (minutes) in **Authenticate and generate a new key after every**.

NOTE

*Specify the same value as **Life time** specified in the configuration for "Phase1 Proposal" in ["Configuring your machine" on page 71](#). Although **Life time** is specified by seconds, enter a value by minutes in this step.*

12. Click **Methods**.
13. On the **Key Exchange Security Methods** window, click **Add**.
14. Specify **Integrity algorithm**, **Encryption algorithm**, and **Diffie-Hellman group**.

NOTE

*Select the same value specified in **IKE Encryption Algorithm**, **IKE Hash Algorithm**, and **Diffie-Hellman group** in the configuration for "Phase1 Proposal" in ["Configuring your machine" on page 71](#).*

15. Click **OK**.
16. On the **Key Exchange Security Methods** window, click **OK**.
17. On the **Key Exchange Settings** window, click **OK**.
18. On the IP security policy properties window, select the **Rules** tab.
19. Click **Add**.
20. On the **Security Rule Wizard**, click **Next**.
21. On the **Tunnel Endpoint** screen, make sure that **This rule does not specify a tunnel** is selected and then click **Next**.
22. On the **Network Type** screen, make sure that **All network connections** is selected and then click **Next**.
23. On the **IP Filter List** screen, click **Add**.
24. On the **IP Filter List** window, click **Add**.
25. On the **IP Filter Wizard**, click **Next**.
26. On the **IP Filter Description and Mirrored Property** screen, click **Next**.
27. On the **IP Traffic Source** screen, click **Next**.
28. On the **IP Traffic Destination** screen, click **Next**.
29. On the **IP Protocol Type** screen, click **Next**.
30. Click **Finish**.
31. On the **IP Filter List** wizard, click **OK**.
32. On the **Security Rule Wizard**, select the new IP filter from the list and then click **Next**.
33. On the **Filter Action** screen, click **Add**.

34. On the **Filter Action Wizard**, click **Next**.
35. On the **Filter Action Name** screen, enter a **Name** and a **Description** and then click **Next**.
36. On the **Filter Action General Options** screen, make sure that **Negotiate security** is selected and then click **Next**.
37. On the **Communicating with computers that do not support IPsec** screen, make sure that **Do not allow unsecured communication.** is selected and then click **Next**.
38. On the **IP Traffic Security** screen, select **Custom** and then click **Settings**.
39. On the **Custom Security Method Settings** window, configure the settings and then click **OK**.

NOTE

Select the same values specified in the configuration for "Phase2 Proposal" in ["Configuring your machine" on page 71](#).

40. On the **IP Traffic Security** screen, click **Next**.
41. Select **Edit properties** and then click **Finish**.
42. On the filter action properties window, select **Use session key perfect forward secrecy (PFS)** if you want to enable Key PFS.
43. Select **Accept unsecured communication, but always respond using IPsec** if you perform IPSec communication by the IPv6 global address.
44. Click **OK**.
45. Select the new filter action and then click **Next**.
46. On the **Authentication Method** screen, select the value you want and then click **Next**.
47. Click **Finish**.
48. On the IP security policy properties window, click **OK**.
49. On the **Local Security Policy** window, select the new IP security policy.
50. From the **Action** menu, select **Assign**.
51. Make sure that **Policy Assigned** for the new IP security policy is displayed as **Yes**.
52. Click **X** on the **Local Security Policy** screen.

CONTROLLING ACCESS USING IP ADDRESS (IP FILTERING)

You can control access to the machine using the IP address. You can set whether to allow configuration or printing from the specified IP addresses. By factory default, IP filtering is disabled.

NOTE

Be sure to specify the correct IP address. If you specify a wrong IP address, you cannot access the machine using the IP protocol.

When you enable IP filtering, the access to and from a host that is not specified in this procedure is rejected.

You can use only IPv4 for IP filtering.

1. Access the machine's web page and log in as the administrator.
 2. Select **Admin Setup**.
 3. Select **Network > Security > IP Filtering**.
 4. Follow the on-screen instructions to specify the detailed settings.
-

NOTE

*If nothing is registered in **Administrator's IP Address setting**, you may not be able to access the machine depending on the specified IP address range.*

***Your Current Local Host/Proxy IP Address** and the IP address of your host may not match if you use a proxy server.*

5. Click **Submit**.

The network system reboots to enable the new settings.

CONTROLLING ACCESS USING MAC ADDRESS (MAC ADDRESS FILTERING)

You can control access to the machine using the MAC address. You can allow or reject the access from the specified MAC addresses.

NOTE

Be sure to specify the correct MAC address. If you specify the wrong MAC address, you cannot access the machine via a network.

You cannot individually specify acceptance or rejection for each address.

1. Access the machine's web page and log in as the administrator.
 2. Select **Admin Setup**.
 3. Select **Network > Security > MAC Address Filtering**.
 4. Follow the on-screen instructions to specify the detailed settings.
-

NOTE

*If nothing is registered in **Administrator's MAC Address setting**, you may not be able to access the machine depending on the specified MAC address.*

***Your Current Local Host/Proxy MAC Address** and the MAC address of your host may not match if you use a proxy server.*

5. Click **Submit**.

The network system reboots to enable the new settings.

ERROR NOTIFICATION BY E-MAIL (E-MAIL ALERT)

You can set the machine to send an error notification e-mail when an error happens. You can set when to be notified:

- > On a regular basis
- > Only when an error occurs

Configuring your machine

You can configure the settings for e-mail alert using the web page.

NOTE

When you specify a domain name in **SMTP Server**, configure the DNS server in the **TCP/IP** setting.

You need to set the mail server to allow the machine to send an e-mail. For details on the mail server setting, refer to your network administrator.

When you use Internet Explorer 7, select **Tools > Internet Options**, click **Custom level** on the **Security** tab, and then select **Enable** in **Allow websites to prompt for information using scripted windows** to send a test e-mail.

1. Access the machine's web page and log in as the administrator.
2. Select **Admin Setup**.
3. Select **Network > E-mail > Send Settings**.
4. Follow the on-screen instructions to specify the detailed settings.
5. Select **Set detail of the SMTP Protocol**.
6. If necessary, you can configure **Security settings**, **Configure attached information**, and **Others**.
7. Click **Submit**.

The network system reboots to enable the new settings.

Regular alert

1. Access the machine's web page and log in as the administrator.
2. Select **Admin Setup**.
3. Select **Network > E-mail > Alert Settings**.
4. Enter an e-mail address to receive the alerts.
5. Click **Setting** for the specified address.
Copy is useful when you want to apply the alert conditions to another address.
6. Follow the on-screen instructions to specify the detailed settings.
7. Click **OK**.
8. Click **View a summary of current configuration** to check the current settings, and then click **X** to close the window.
You can also check the current settings of up to two addresses on the main window. Select the desired addresses from the list box.
9. Click **Submit**.

The network system reboots to enable the new settings.

NOTE

If there is no error specified, the alert e-mail is not sent.

Alert when an error occurs

1. Perform steps 1 to 6 in "Regular alert".
2. Specify the time lag between when an error occurs and when the alert is sent.
If you specify a longer time, only continuing errors are notified.
3. Click **OK**.
4. Click **View a summary of current configuration** to check the current settings, and then click **X** to close the window.
You can also check the current settings of up to two addresses on the main window. Select the desired addresses from the list box.
5. Click **Submit**.
The network system reboots to enable the new settings.

USING SNMPv3

The SNMPv3 manager supporting SNMPv3 encrypts the management of the machine by SNMP.

1. Access the machine's web page and log in as the administrator.
2. Select **Admin Setup**.
3. Select **Network > SNMP > Setting**.
4. Follow the on-screen instructions to specify the detailed settings.
5. Click **Submit**.

The network system reboots to enable the new settings.

NOTE

*Your machine has an SNMP agent. You can check and change the machine settings by a commercially available SNMP agent. For the MIB of the machine, refer to the DVD supplied with your machine and check "Readme.text" in the **MISC > Mib** folder.*

USING IPV6

Your machine supports IPv6. The machine gets an IPv6 address automatically. You cannot set the IPv6 address manually.

The machine supports the following protocols:

- > For Printing:
 - > LPR
 - > IPP
 - > RAW (Port9100)
 - > FTP
- > For Configuration:
 - > HTTP
 - > SNMPv1/v3
 - > Telnet

NOTE

To enter the **Admin Setup** menu, the administrator password is necessary.
The default password is "aaaaaa".

The table below shows the protocols that are supported:

PROTOCOL	OS	APPLICATION	LIMITATIONS
LPD	<ul style="list-style-type: none">Windows 7Windows VistaWindows XP	LPR (Command Prompt)	*1, 2, 3
FTP	<ul style="list-style-type: none">Windows 7Windows VistaWindows XP	FTP (Command Prompt)	*1, 2, 3
	<ul style="list-style-type: none">Mac OS X	FTP (Terminal)	*1, 2, 3
HTTP	<ul style="list-style-type: none">Windows 7Windows VistaWindows XP	Internet Explorer 6.0/7.0	*1, 2, 3
	<ul style="list-style-type: none">Mac OS X	Safari (2.0-v412.2)	*1, 2, 3, 4
Telnet	<ul style="list-style-type: none">Windows 7Windows VistaWindows XP	Telnet (Command Prompt)	*1, 2, 3
	<ul style="list-style-type: none">Mac OS X	FTP (Terminal)	*1, 2, 3

*1) To specify a host name, edit the hosts file or access via the DNS server.

*2) You cannot specify a host name by the DNS server when you enable only IPv6 on Telnet.

*3) You cannot specify a host name when you use a link local address to access.

*4) Enter an IPv6 address enclosed with brackets.

NOTE

To use IPv6 on Windows XP, install IPv6.

ENABLING IPv6

1. Access the machine's web page and log in as the administrator.
2. Select **Admin Setup**.
3. Select **Network > TCP/IP**.
4. Select **Enable** for **IPv6**.
5. Click **Submit**.

The network system reboots to enable the new settings.

CHECKING IPv6 ADDRESS

The IPv6 address is automatically assigned.

1. Select **View Info**.
2. Select **Network > TCP/IP**.

NOTE

When the global address is displayed with only "0", it may be an error due to the router you use.

You can also check the IPv6 address in the network report from the machine by pressing the **SETTING** key and then selecting **Reports > System > Network Information**.

USING IEEE802.1X

Your machine supports the IEEE802.1X authentication.

Be sure to set up your machine and computer in advance before performing the following procedure.

NOTE

For details on the initial setup and the IP address, refer to ["Configuring the network settings" on page 9](#).

CONFIGURING YOUR MACHINE FOR IEEE802.1X

Using PEAP

1. Access the machine's web page and log in as the administrator.
2. Select **Admin Setup**.
3. Select **Network > IEEE802.1X**.
4. Select **Enable** for **IEEE802.1X**.
5. Select **PEAP** for **EAP Type**.
6. Enter a user name in **EAP User**.
7. Enter a password in **EAP Password**.
8. Select **Authenticate Server** and then click **Import**.
9. Enter the file name of the CA certificate and then click **OK**.

Specify the certificate issued by the certificate authority from which the RADIUS server got it. A PEM, DER, and PKCS#7 file can be imported.

10. Click **Submit**.

The network system reboots to enable the new settings.

11. When the standby screen appears on the machine, turn off the machine.
12. Go to ["Connecting your machine to authentication switch" on page 79](#).

Using EAP-TLS

1. Access the machine's web page and log in as the administrator.
2. Select **Admin Setup**.
3. Select **Network > IEEE802.1X**.
4. Select **Enable** for **IEEE802.1X**.
5. Select **EAP-TLS** for **EAP Type**.
6. Enter a user name in **EAP User**.
7. Select **Not use SSL/TLS Certificate for EAP authentication** and then click **Import**.
8. Enter the file name of the certificate.
Only a PKCS#12 file can be imported.
9. Enter the password of the certificate and then click **OK**.
10. Select **Authenticate Server** and then click **Import**.
11. Enter the file name of the CA certificate and then click **OK**.
Specify the certificate issued by the certificate authority from which the RADIUS server got it. A PEM, DER, and PKCS#7 file can be imported.
12. Click **Submit**.
The network system reboots to enable the new settings.
13. When the standby screen appears on the machine, turn off the machine.
14. Go to ["Connecting your machine to authentication switch" on page 79](#).

CONNECTING YOUR MACHINE TO AUTHENTICATION SWITCH

1. Make sure that the machine is turned off.
2. Connect an Ethernet cable to the network interface port.
3. Connect the Ethernet cable to the authentication port of an authentication switch.
4. Turn on the machine.
5. Set up the machine.

NOTE

For details on the initial setup, refer to ["Configuring the network settings" on page 9](#).

CONFIGURING LDAP SERVER

NOTE

For details on the LDAP server and encryption settings to be specified, refer to your network administrator.

1. Access the machine's web page and log in as the administrator.
2. Select **Admin Setup**.
3. Select **Network > LDAP**.
4. Enter the domain name or IP address of the LDAP server in **LDAP Server**.
5. Enter the port number of the LDAP server in **Port Number**.
6. Specify a value for time-out to wait for the search results in **Timeout**.
7. Specify a value for the maximum entry of the search results in **Max. Entries**.
8. Specify a BaseDN to access the LDAP server in **Search Root**.
9. Enter attribute names to be searched for as the user name in **User Name**.
Be sure to specify a value for **Name 1**.
10. Enter an e-mail address to be searched for in **Mail Address**.
11. If necessary, specify a search condition in **Additional Filter**.
12. Select the authentication method you want in **Method**.
 - > When you select **Anonymous** or **Simple**, user authentication using LDAP fails. You need to select **Digest-MD5** or **Secure Protocol** if you configure the LDAP server for user authentication.
 - > When you select **Digest-MD5**, you need to configure the DNS server setting.
 - > When you select **Secure Protocol**, you need to configure the DNS server and the secure protocol server settings.
13. If you do not select **Anonymous** in step 12, specify the user ID and password to log in to the LDAP server.
14. Select a value in **Encryption**.
15. Click **Submit**.
The network system reboots to enable the new settings.

CONFIGURING SECURE PROTOCOLS

Authentication using the Kerberos server is available when you access the LDAP server. Be sure to complete the SNTP and DNS server settings to use the secure protocol.

1. Access the machine's web page and log in as the administrator.
2. Select **Admin Setup**.
3. Select **Network > Secure Protocol Server**.
4. Enter a realm name in **Domain**.
5. Click **Submit**.

The network system reboots to enable the new settings.

PRINTING WITHOUT PRINTER DRIVER (DIRECT PRINTING)

PRINTING PDFs

You can print PDFs without a printer driver. Specify the file you want to print on the web page and submit it to the machine.

NOTE

- > *It may be necessary to install additional RAM in order to print some PDF files.*
 - > *If you have problems printing a PDF file, open the file in Adobe Reader and print it.*
-

1. Access the machine's web page and log in as the administrator.
2. Select **Direct Print**.
3. Select **Web Printing**.
4. Follow the on-screen instructions to specify the detailed settings.
5. Check the settings and then click **OK**.
6. Click **Print**.

CONFIGURING SERVER TO PRINT FILES ATTACHED TO E-MAILS

You can print attached files when the machine receives an e-mail.

NOTE

- > *When you have performed the initial setup described in ["Configuring the network settings" on page 9](#), the server settings are finished.*
 - > *Up to 10 files and a maximum of 8 MB for each file can be printed.*
 - > *PDF, JPEG, and TIFF files can be printed.*
 - > *It may be necessary to install additional RAM in order to print some PDF files.*
 - > *If you have problems printing a PDF file, open the file in Adobe Reader and print it.*
-

Configuration for POP

1. Access the machine's web page and log in as the administrator.
2. Select **Admin Setup**.
3. Select **Network > E-mail > Receive Settings**.
4. Select **POP3** and then click **To STEP2**.
5. Follow the on-screen instructions to specify the detailed settings.

NOTE

Be sure to specify the correct value for your mail server. If you enable APOP when your mail server does not support the APOP protocol, e-mails may not be correctly received.

*When you specify a domain name for the mail server, configure the DNS server in the **TCP/IP** setting.*

6. Click **Submit**.

NOTE

When the POP server does not support the SSL encryption, e-mails may not be correctly received.

Configuration for SMTP

1. Access the machine's web page and log in as the administrator.
2. Select **Admin Setup**.
3. Select **Network > E-mail > Receive Settings**.
4. Select **SMTP** and then click **To STEP2**.
5. Follow the on-screen instructions to specify the detailed settings.
6. Click **Submit**.

CHANGING SETTINGS ON ETHERTALK (MAC ONLY)

CHANGING ETHERTALK MACHINE NAME

1. Access the machine's web page and log in as the administrator.
2. Select **Admin Setup**.
3. Select **Network > EtherTalk**.
4. Enter a new name in **EtherTalk Printer Name**.
5. Click **Submit**.

CHANGING ETHERTALK ZONE

1. Access the machine's web page and log in as the administrator.
2. Select **Admin Setup**.
3. Select **Network > EtherTalk**.
4. Enter a new zone name in **EtherTalk Zone Name**.
5. Click **Submit**.

NOTE

Be sure to specify a zone in the same segment.

OTHER OPERATIONS

This section explains how to initialize the network settings and how to setup your machine and computer to use DHCP.

INITIALIZING NETWORK SETTINGS

NOTE

This procedure initializes all the network settings.

1. Press the **SETTING** key.
2. Using the **Down** arrow key, scroll to `Admin Setup` and then press **OK**.
3. Enter the administrator password.
4. Select `Enter` and then press **OK**.
5. Using the arrow keys, scroll to `Network Menu` and then press **OK**.
6. Make sure that `Network Setup` is selected and then press **OK**.
7. Using the arrow keys, scroll to select `Factory Defaults` and then press **OK**.
8. Press **OK**.
9. Using the arrow keys, highlight `Yes` to continue or `No` to exit and then press **OK**.
The machine restarts to enable the new settings.

USING DHCP

You can get an IP address from the DHCP server.

NOTE

- > *You must be authorized as the administrator.*
 - > *If you enter a wrong IP address, the network system may go down.*
 - > *You can also get an IP address from the BOOTP server.*
-

CONFIGURING DHCP SERVER

DHCP assigns an IP address to each host on the TCP/IP network.

NOTE

The machine must have a static IP address if you want to print via a network. For details on how to assign a static IP address, refer to the manual of your DHCP server.

The following OSs are supported: Windows Server 2008 R2, Windows Server 2008, and Windows Server 2003

The following procedure uses Windows Server 2008 as an example. The procedures and menus may differ depending on the OS you use.

1. Click **Start > Server Manager**.
If **DHCP Server** is already displayed, go to step 8.
2. Select **Add Roles** on the **Roles Summary** area.
3. On the **Add Roles Wizard**, click **Next**.
4. Select **DHCP Server** and click **Next**.

5. Follow the on-screen instructions and configure the settings as necessary.
6. On the **Confirm Installation Selections** screen, check the settings and click **Install**.
7. When the installation finishes, click **Close**.
8. Click **Start** and select **All Programs > Administrative Tools > DHCP** to launch the **DHCP** wizard.
9. On the DHCP list, select a server to use.
10. From the **Action** menu, select **New Scope**.
11. On the **New Scope Wizard**, follow the on-screen instructions and configure the settings as necessary.
 - > Be sure to configure the default gateway settings.
 - > On the **Activate Scope** screen, select **Yes, I want to activate this scope now**.
12. Click **Finish**.
13. Select the new scope from the DHCP list and then select **Reservations**.
14. From the **Action** menu, select **New Reservation**.
15. Configure the settings.
16. Click **Add**.
17. Click **X** to close the **DHCP** wizard.

CONFIGURING YOUR MACHINE

The following explains how to configure your machine to use DHCP/BOOTP. By factory default, the DHCP/BOOTP protocol is enabled, so you do not have to perform this procedure.

NOTE

The following procedure is explained using Network Card Setup and Windows 7 as an example. The procedures and menus may differ depending on the OS you use.

1. Turn on the machine.
2. Turn on your computer.
3. Insert the Software DVD-ROM into the DVD drive.

The Setup Utility starts automatically. If it does not start, double-click **setup.exe** (in the root directory) on the DVD-ROM.
4. Choose your language.
5. Select your model and then click **Next**.
6. Read the license agreement and click **I Agree**.
7. Select **Device Configuration > Network Card Setup**.
8. Select your machine from the list.
9. From the **Setting** menu, select **Setting Printer**.
10. Enter the IP address and then click **OK**.

11. Enter the password for **Password** and then click **OK**.

NOTE

The initial password is the last six digits of the Ethernet address.

The password is case-sensitive.

12. Click **OK** on the confirmation window.

The machine restarts to enable the new settings. During the restart, the machine status icon changes to red. When the machine has restarted and the new settings have been enabled, the status icon changes to green.

13. From the **File** menu, select **Exit** to close Network Card Setup.

APPENDIX A - MENU SYSTEM

The top-level function menus are:

- > Reports
- > Paper setup
- > Address book
- > Phone book
- > Profile
- > Network scan destination
- > Store document settings
- > View information
- > Shutdown
- > Easy setup
- > Admin setup

The menu trees are given to the lowest menu item level. Typically, this can be a parameter that can be set by selecting from a range of values provided or a command that can be executed to display or print a status or setting value.

REPORTS

ITEM	OPTION		OPTION/DESCRIPTION	
Configuration	Yes, No		Prints out a report of the machine's configuration	
System	File List	Yes, No	Prints out a file list	
	Demo Page	01:DEMO1	Yes, No	Prints a Demonstration page
	Error Log	Yes, No	Prints out an error log	
	MFP Usage	Yes, No	Prints a full report of the machine usage.	
	Network Information	Yes, No	Prints out a report of the Network configuration	
Fax ^a	Speed Dial List	Enter the Admin Password	Yes, No	Prints the list of fax numbers registered for speed dials.
	Group List	Enter the Admin Password	Yes, No	Prints the list of fax numbers registered under groups.
	Fax Tx/Rx Log	Enter the Admin Password	Yes, No	Prints the list of the communication results for the latest 100 fax jobs received or sent.
	Fcode Box List	Yes, No	Prints the list of fcode boxes.	
E-mail/Internet Fax	Journal Report	Enter the Admin Password	Yes, No	Prints the results of the latest 50 Internet Fax jobs.
	Address Book	Enter the Admin Password	Yes, No	Prints the registered address list.
Print	PCL Font List	Yes, No	Prints the list of PCL font samples.	
	PSE Font List	Yes, No	Prints the list of PostScript font samples.	
	PPR Font List	Yes, No	Prints the list of IBM PPR font samples.	
	FX Font List	Yes, No	Prints the list of EPSON FX font samples.	
	Color Tuning Pattern	Yes, No	Prints a color tuning pattern for adjusting gradation characteristics.	
	Color Profile List	Yes, No	Prints the list of colour profiles.	

a. MC361 and MC561 only.

PAPER SETUP

ITEM	OPTION		OPTION/DESCRIPTION
Tray 1	Paper Size	A4 /A5/A6/B5/ Letter/Legal13/ Legal13.5/Legal14/ Executive/ 16K(184x260mm)/ 16K(195x270mm)/ 16K(197x273mm)/ Custom	Sets paper in Tray 1.
	Custom	Width: 105~ 210 ~216mm Length: 148~ 297 ~356mm	Enter paper width and length.
	Media Type	Plain /Letter Head/ Bond/Recycled/Card Stock/Rough/Glossy	Select the type of media loaded in this tray. This will help the MFP to adjust its internal operating parameters, such as engine speed and fusing temperature, to better accommodate the media to be fed. For example, letterhead may benefit from a slightly lower fusing temperature to ensure that its ink does not offset.
	Media Weight	Light/Medium Light/ Medium /Heavy/ Ultra Heavy1	Adjusts the MFP for the weight of paper stock loaded in this tray.
Tray 2	Paper Size	A4 /A5/B5/Letter/ Legal13/Legal13.5/ Legal14/Executive/ 16K(184x260mm)/ 16K(195x270mm)/ 16K(197x273mm)/ Custom	Sets paper in Tray 2.
	Custom	Width: 148~ 210 ~216mm Length: 210~ 297 ~356mm	Enter paper width and length.
	Media Type	Plain /Letter Head/ Bond/Recycled/Card Stock/Rough/Glossy	Select the type of media loaded in this tray. This will help the MFP to adjust its internal operating parameters, such as engine speed and fusing temperature, to better accommodate the media to be fed. For example, letterhead may benefit from a slightly lower fusing temperature to ensure that its ink does not offset.
	Media Weight	Light/Medium Light/ Medium /Heavy/ Ultra Heavy1	Adjusts the MFP for the weight of paper stock loaded in this tray.

ITEM	OPTION		OPTION/DESCRIPTION	
MP Tray	Paper Size	A4/A5/A6/B5/ Letter/Legal13/ Legal13.5/Legal14/ Executive/ 16K(184x260mm)/ 16K(195x270mm)/ 16K(197x273mm)/ Custom/COM-9 Envelope/COM-10 Envelope/Monarch Envelope/DL Envelope/C5 Envelope/Index Card	Select the size of paper to be fed from the multi purpose tray.	
	Custom	Width: 64~ 210 ~216mm Length: 127~ 297 ~1321mm	Enter paper width and length.	
	Media Type	Plain/Letter Head/ Labels/Bond/ Recycled/Card Stock/Rough/Glossy	Select the type of media to be fed from the multi purpose tray so that the MFP can adjust its internal parameters to better accommodate the selected type of media.	
	Media Weight	Light/Medium Light/ Medium /Heavy/ Ultra Heavy1/Ultra Heavy2	Select the media weight to be fed from the multi purpose tray.	
Select Tray	Fax ^a	Tray 1:	ON/OFF/ON(Prior)	Fax: Set tray for received Fax. Tray usage, priority given to trays set to ON(Prior), then ON. If tray is set to OFF, it will not be used.
		Tray 2:	ON/OFF/ON(Prior)	
		MP Tray:	ON/OFF/ON(Prior)	
	Copy	Tray 1:	ON/OFF/ ON(Prior)	Copy: Set tray for copy jobs. If Tray Selection is set to "Auto": Tray usage, priority given to trays set to ON, then ON(Prior). If tray is set to OFF, it will not be used.
		Tray 2:	ON/OFF/ON(Prior)	
		MP Tray:	ON/OFF/ON(Prior)	

a. MC361 and MC561 only.

ADDRESS BOOK

ITEM	OPTION		OPTION/DESCRIPTION
E-mail Address			Select an address number. Max. 100 entries.
Register	Name	user defined	Enter a name for the e-mail address entry. Max. 16 characters.
	E-mail Address	user defined	Enter the e-mail address. Max. 80 digits.
	Group No.		Add to a registered group.
Edit			Edit settings. Refer to options above for details.
Delete	Yes, No		Delete entry.
Sort By Name			Sort list of entries by name.
Sort By Number			Sort list of entries by number.
E-mail Group			Select a group number. Max. 20 group entries.
Register	Name	user defined	Enter a name for the e-mail group entry. Max. 16 characters.
	Address No.		Select and assign addresses from resultant list. Max. 100 entries can be register to a group.
Edit			Edit settings. Refer to options above for details.
Delete	Yes, No		Delete entry.
Sort By Name			Sort list of entries by name.
Sort By Number			Sort list of entries by number.

PHONE BOOK

NOTE
MC361 and MC561 only.

ITEM	OPTION		OPTION/DESCRIPTION
Speed Dial			Select a speed dial number. Max. 100 speed dial entries.
Register	Name	user defined	Enter a name for the speed dial entry. Max. 24 characters.
	Fax Number	user defined	Enter the fax number for the speed dial entry. Max. 40 digits.
	Group No.		Add to a registered group.
Edit			Edit settings. Refer to options above for details.
Delete	Yes, No		Delete entry.
Sort By Name			Sort list of entries by name.
Sort By Number			Sort list of entries by number.
Group No.			Select a group number. Max. 20 group entries.
Register	Name	user defined	Enter a name for the group dial entry. Max. 16 characters.
	Speed Dial		Select and assign speed dial entries from resultant list. Max. 100 entries can be register to a group.
Edit			Edit settings. Refer to options above for details.
Delete	Yes, No		Delete entry.
Sort By Name			Sort list of entries by name.
Sort By Number			Sort list of entries by number.

PROFILE

ITEM	OPTION		VALUE/DESCRIPTION	
No.			Select a profile number.	
Register	Profile Name	user defined	Sets a profile name. Max. 16 characters.	
	Protocol	CIFS, FTP, HTTP	Selects a protocol to use for storing files.	
	Target URL	user defined	Sets a server address and a directory to store the scanned data. Max. 144 characters.	
	Port No.	1 ~ 445 ~ 65535	Sets a port number.	
	PASV Mode	OFF	Sets whether to use the FTP Passive mode. Display condition: Protocol set to FTP.	
	User Name	user defined	Sets a user name to use for logging onto the server. Max. 32 characters.	
	Password	user defined	Sets a password to use when logging onto the server. Max. 32 characters.	
	CIFS Character Set	UTF-16, ASCII	Sets a character set to use in CIFS. Display condition: CIFS is set as a protocol.	
	Encode Communication	None	Selects an encryption method for communication. Not available when using CIFS protocol. Choices vary depending on the protocol selected.	
	Scan Size	A4, A5, A6, B5, Letter, Legal 13, Legal 13.5, Legal 14, Executive	Selects a scan size.	
	Image Settings	Density	-3 ~ 0 ~ +3	Sets the density of images.
		Document Type	Text, Text&Photo , Photo, Photo (Glossy)	Sets the image quality.
		Background Removal	OFF, 1, 2, 3 , 4, 5, 6	Sets the default setup of the background removal.
		Resolution	75dpi, 100dpi, 150dpi, 200dpi , 300dpi, 400dpi, 600dpi	Selects a resolution.
		Contrast	-3 ~ 0 ~ +3	Sets the contrast.
		Hue	-3 ~ 0 ~ +3	Sets the red-green colour balance.
		Saturation	-3 ~ 0 ~ +3	Sets the colour saturation.
		RGB	-3 ~ 0 ~ +3 R:[0], G:[0], B:[0]	Sets the RGB contrast.

ITEM	OPTION		VALUE/DESCRIPTION	
Register (cont.)	File Name	user defined	Sets a file name. Max. 64 characters. The following options can be set as the default file name: #n: adding a serial number from 00000 to 99999 #d: adding the date of a file creation (yymmddhhmmss)	
	Greyscale	OFF, ON	Select ON to print in grayscale.	
	File Format	Color	PDF, TIFF, JPEG, XPS	Sets a file format for scanning.
		Mono (Greyscale)	PDF, TIFF, JPEG, XPS	
		Mono (Binary)	PDF, TIFF, XPS	
	Encrypted PDF	Not Encrypt	Encryption disabled.	
		Encrypt	Low, Medium, High	Set encryption level. Also enable/disable document open and permissions passwords.
	Compression Rate	Color	High, Medium, Low	Sets a compression rate for scanning.
		Mono (Greyscale)	High, Medium, Low	
		Mono (Binary)	High, Medium, Raw	
	Edge Erase	OFF		Sets whether to erase the edge shadow created in the surrounding of 2-page spread documents.
		ON	Width: 5 mm	Sets an erasing width. Range: 5 to 50 mm.
Edit			Edit profile settings. Refer to options above for details.	
Delete	Yes, No		Delete profile.	
Sort By Name			Sort list of entries by name.	
Sort By Number			Sort list of entries by number.	

NETWORK SCAN DESTINATION

ITEM	OPTION		OPTION/DESCRIPTION
No.			Select a destination number.
Register	Destination	user defined	Sets a destination name. Max. 16 characters.
	Destination Address	user defined	Sets a destination address. Max. 16 characters.
	Port No.	9968	Sets a port number. Available range: 1 to 65535.
Edit	Destination		Edit destination name.
	Destination Address		Edit destination address.
	Port No.		Edit port no.
Delete	Yes, No		Deletes destination.
Sort By Name			Sort list of entries by name.
Sort By Number			Sort list of entries by number.

STORE DOCUMENT SETTINGS

ITEM	OPTION		OPTION/DESCRIPTION
Store	Fcode Bulletin Board	Over Write	Stores documents in a bulletin box.
Delete	Fcode Bulletin Board		Deletes accumulated documents.
	Received Documents		
Print	Fcode Box		Prints accumulated documents.
	Reserved Tx Doc.		
	Received Documents		

VIEW INFORMATION

ITEM	OPTION	OPTION/DESCRIPTION
System Information	Serial No. Asset No. Lot No. CU Version PU Version Scanner Version Total Memory Flash Memory SD Memory Card ^a	Displays system information
Network	IPv4 Address ^b Subnet Mask ^b Gateway Address ^b MAC Address NIC Program Version IPv6 Address (Local) ^c IPv6 Address (Global) ^c	Displays network information

a. MC561 only.

b. Appears only when the "TCP/IP" setting is "Enable" and the "IP Version" setting is "IPv4".

c. Appears only when the "TCP/IP" setting is "Enable" and the "IP Version" setting is "IPv6".

SHUTDOWN

ITEM	OPTION	OPTION/DESCRIPTION
Shutdown	Yes, No	Select Yes to perform a controlled shutdown of the MFP, ensuring that all files on the internal hard disk are closed before power is turned off. Only power the MFP off when the display indicates that shutdown is complete.

EASY SETUP

NOTE

The Easy Setup menu is blocked by the Admin password.

ITEM	OPTION		OPTION/DESCRIPTION	
Date/Time Setting	user defined		Using the arrow keys, select your time zone, in relation to GMT, from the list. Press OK to continue.	
	Not Summer Time Now Summer Time	Manual	Day Month Year	Using the keypad and arrow keys, enter the correct date and time.
			Hour Minute Second	
		Server	Set Address of SNTP Server (Primary)	user defined
			Set SNTP Server (Secondary)	
		Fax Setting ^a	Fax Number	user defined
	Sender ID	user defined	Using the arrow keys and on screen keyboard, enter the sender ID.	
Network Setting	Manual Auto	IP Address	Specifies whether IP address allocation is automatic (DHCP) or manually assigned. Display condition: TCP/IP protocol must be enabled.	
		Subnet Mask	Current assigned subnet mask. To change, enter the address using the keypad. Press OK to register new address. Display condition: TCP/IP protocol must be enabled.	
		Default Gateway	Current assigned gateway address. To change, proceed as above. Display condition: TCP/IP protocol must be enabled.	
		DNS Server (Primary)	Current assigned DNS server (primary).	
		DNS Server (Secondary)	Current assigned DNS server (secondary).	
		WINS Server (Primary)	Current assigned WINS server (primary).	
		WINS Server (Secondary)	Current assigned WINS server (secondary).	

ITEM	OPTION		OPTION/DESCRIPTION
E-mail Setting	Set IP Address of Mail Server	user defined	Enter the IP address of the mail server.
	From	user defined	Enter the sender's address
	No Authentication		Set the authentication method.
	SMTP Auth	User Name	
		Password	
	POP Before SMTP	Set Address of POP3 Server	
		User Name	
		Password	

a. MC361 and MC561 only.

ADMIN SETUP

NOTE

The Admin Setup option is blocked by a password.

ITEM	OPTION		VALUE/DESCRIPTION	
Copy Setup	Default Settings	Scan size	A4 , A5, A6, B5, Letter, Legal 13, Legal 13.5, Legal 14, Executive	Allows you to select the document size.
		Duplex Document -> Bind Position	OFF(Simplex) , Simplex -> Duplex LE, Simplex -> Duplex SE, Duplex -> Duplex, Duplex LE -> Simplex, Duplex SE -> Simplex	Turns the duplex (2-sided) function off or on. Note: A6 duplex copy is not supported.
		Zoom	Auto, 100% , Zoom (25-400%), A4->A5(70%), Leg14->Let(78%), Leg13.5->Let(81%), Leg13->Let(84%), A4->B5(86%), A4->Let(94%), Let->A4(97%), Fit to page(98%), B5->A4(115%), A5->A4(141%)	Allows you to scale the copy using the presets values or by scaling in 1% increments up to 400% and down to 0 by entering the value using the keypad.
		Sort	ON , OFF	ON prints 1 entire copy/set of the multiple copy document at a time (e.g. pages 1,2,3,1,2,3,1,2,3,...) OFF batch prints the multiple copy document page by page (e.g. pages 1,1,1,2,2,2,3,3,3,...)

ITEM	OPTION		VALUE/DESCRIPTION	
Copy Setup (cont.)	Default Settings (cont.)	Image Settings		
		Density :	-3 ~ 0 ~ +3	Allows you to edit the image settings.
		Document Type :	Text, Text&Photo , Photo, Photo (Glossy)	
		Scan Resolution :	Normal , Extra Fine	
		Background Removal :	OFF, 1, 2, 3 , 4, 5, 6	
		Contrast :	-3 ~ 0 ~ +3	
		Hue :	-3 ~ 0 ~ +3	
		Saturation :	-3 ~ 0 ~ +3	
		RGB :	-3 ~ 0 ~ +3 R:0/G:0/B:0	
		Direction	Portrait , Landscape	Selects the default page orientation.
		ID Card Copy	ON, OFF	Allows you to set ID card copying as the default copy mode. Note: place the ID card 5mm from the edge of the scanner flatbed.
		Continue Scan	ON, OFF	Allows you to continue scanning more documents. Allows you to construct a single scan job from multiple individual sheets or originals.
		Mixed Size	ON, OFF	Allows you to load originals of same width but different length in the ADF. The following document sizes can be set concurrently; A3 and A4 LEF, B4 and B5 LEF, A4SEF and A5 LEF. When enabled, the tray setting is automatic, you cannot specify a tray manually.
		Margin	ON, OFF	Allows you to change the document top and left margin areas. Input range: -25 to +25mm.

ITEM	OPTION		VALUE/DESCRIPTION	
Copy Setup (cont.)	Default Settings (cont.)	Edge Erase	ON, OFF	Allows you to block out the peripheral areas of the document where spurious shadows and borders may arise when copying with the document cover open (such as with books and magazines) or for other purposes. Input range: 5 to 50mm.
Fax Setup ^a	Default Settings	Resolution	Normal , Fine, Extra-Fine, Photo	Allows you to specify the type of images on the document.
		Density	-3 ~ 0 ~ +3	Adjust density Darker: Keep colour intensity and darker image. Lighter: Reduce colour intensity and gives lighter image.
		Scan Size	A4 , Letter, Legal 13, Legal 13.5, Legal 14	Allows you to select the paper size to match the document size.
		Continue Scan	ON, OFF	Allows you to continue scanning more documents. Allows you to construct a single fax job from multiple individual sheets or originals.
		TTI	ON , OFF	Prints the sender name on the header of the transmitted fax. By default, the name you specified in Sender ID is printed.
		Transmit Confirmation Report	ON, OFF	Select ON to print a fax confirmation after transmission.
		Memory Tx	ON , OFF	Select OFF to enable real time transmission, i.e. fax transmission synchronisation with scanning.

ITEM	OPTION		VALUE/DESCRIPTION	
Fax Setup ^a (cont.)	Fcode Box Register	Confidential Box Box Name Sub-Address Hold Time I.D.Code	user defined user defined 00 ~ 0 ~ 31 user defined	Confidential Box: received data cannot be printed without entering ID code (for secret documents). You can also enter a Box Name, Password and specify the hold time for your secure box. Range: 00 - 31
		Bulletin Box Box Name Sub-Address	user defined user defined	Bulletin Box: Enable to transmit/receive documents to/from Bulletin.
		Edit	Edit settings. Refer to options above for details.	
		Delete	Yes, No	Delete entry.
	Security Function	ID Check Tx	ON, OFF	Check and match the last four digits of the destination fax numbers with those registered in the target. If ON, the MFP will send only when they match.
		Broadcast Destination	ON, OFF	Fax number confirmation screen displays before sending the fax.
		Confirm Dial	ON, OFF	When ON, you will be asked to re-enter the destination fax number. The fax will only be sent when the two numbers match.
	Other Settings	Redial Tries	0 ~ 2 ~ 9 time(s)	Set the number of redial attempts. Range: 0 - 9 time(s)
		Redial Interval	1 ~ 5 minute(s)	Set the time between redial attempts. Range: 1 - 5 minute(s)
		Ring Response	1 Ring, 5 seconds, 10 seconds, 15 seconds, 20 seconds	Enter the number of rings required before receiving an incoming fax.
		Dialling Pause Duration	0 ~ 2 ~ 10 second(s)	Enter the pause duration required. Range: 0 - 10 second(s)
		Rx Reduc. Rate	Auto, 100%	Select the Rx reduction rate.
		Reduc. Margin	0 ~ 24 ~ 100 mm	Select the reduction margin. Range: 0 - 100 mm

ITEM	OPTION		VALUE/DESCRIPTION	
Fax Setup ^a (cont.)	Other Settings (cont.)	ECM Mode	ON, OFF	Error correction mode (ECM) automatically detects and corrects errors in the fax transmission process that are sometimes caused by telephone line noise.
		Prefix	user defined	Enter the require dialling prefix (if you are connected via a PBX then you need to enter a prefix to obtain an outside line connection).
		Received Time Stamp	ON, OFF	Set to ON if you want the time stamp printed on incoming faxes.
		Print Check Message	ON, OFF	If enabled, when a transmission error occurs the error content is reported.
	Fax Setting	Service Bit	ON, OFF	
		Country Code	International	Select the country in which the MFP is situated.
		H/Modem Rate (For Tx)	33.6 Kbps , 28.8 Kbps, 14.4 Kbps, 9.6 Kbps, 48. Kbps	Specify modem rate. Note: If you are using an IP phone line and fax Tx/Rx fails, change the modem rate to 14.4kbps or less.
		H/Modem Rate (For Rx)	33.6 Kbps , 28.8 Kbps, 14.4 Kbps, 9.6 Kbps, 48. Kbps	
		PBX Line	ON, OFF	
		Forwarding Setting	ON, OFF	
		TAD Mode	Type 1, Type 2, Type 3	Specify TAD mode type.
		Tel Priority Mode	ON, OFF	
		CNG Detection	ON, OFF	
		T/F Timer Programming	20 seconds , 35 seconds	
		Soft Ringer Volume	OFF, Low, Middle, High	Select volume level.
		Remote Receive Number	OFF , 000, 111, 222, 333, 444, 555, 666, 777, 888, 999	

ITEM	OPTION		VALUE/DESCRIPTION	
Internet Fax Setup	Default Settings	Scan Size	A4 , Letter, Legal 13, Legal 13.5, Legal 14	Allows you to select the paper size to match the document size.
		Density	-3 ~ 0 ~ +3	Adjust density Darker: Keep colour intensity and darker image. Lighter: Reduce colour intensity and gives lighter image.
		Resolution	Normal , Fine, Extra-Fine, Photo	Allows you to specify the type of images on the document.
		Background Removal	OFF, 1, 2, 3 , 4, 5, 6	Allows you to block out the colour background of the image (assuming document has a colour background) - such that the background colour is not printed.
		Continue Scan	ON, OFF	Allows you to continue scanning more documents. Allows you to construct a single fax job from multiple individual sheets or originals.
		Compression Rate	High, Medium, Low	Select the appropriate compression level.
Scanner Setup	Default Settings	Scan Size	A4 , A5, A6, B5, Letter, Legal 13, Legal 13.5, Legal 14, Executive	Allows you to select the scan size.
		Image Settings Density : Document Type : Background Removal : Resolution : Contrast : Hue : Saturation : RGB :	-3 ~ 0 ~ +3 Text, Text&Photo , Photo, Photo (Glossy) OFF, 1, 2, 3 , 4, 5, 6 75dpi, 100dpi, 150dpi, 200dpi , 300dpi, 400dpi, 600dpi -3 ~ 0 ~ +3 -3 ~ 0 ~ +3 -3 ~ 0 ~ +3 -3 ~ 0 ~ +3 R:0/G:0/B:0	Allows you to adjust image settings.
		Continue Scan	ON, OFF	Allows you to continue scanning more documents. Allows you to construct a single scan job from multiple individual sheets or originals.

ITEM	OPTION		VALUE/DESCRIPTION	
Scanner Setup (cont.)	Default Settings (cont.)	Greyscale	ON, OFF	Select ON to print in grayscale.
		File Format Color: Greyscale: Mono:	PDF , TIFF, JPEG, XPS PDF , TIFF, JPEG, XPS PDF , TIFF, XPS	Select the appropriate file format.
		Encrypted PDF Setting Document Open Password: Permissions Password: Display Default Password:	user defined user defined Disable , Enable	Set the encryption passwords and display option.
		Compression Rate Color: Greyscale: Mono:	High, Medium, Low High, Medium, Low High , Medium, Raw	Select the appropriate compression level.
		Edge Erase	ON, OFF	Input range: 5 to 50mm.

ITEM	OPTION		VALUE/DESCRIPTION	
Scanner Setup (cont.)	E-mail Setup			
	File Name		user defined	
	Template	Edit Subject Edit Body	Select template from list	
	From / Reply To	From:		Select e-mail address from the address book.
		Address Book		
		Direct Input		Enter e-mail address using the on-screen keyboard.
		LDAP	Simple Search	Use the on-screen keyboard to enter a search value.
			Advanced Search Search Method User Name E-mail Address	Use Advanced Search to search the LDAP address book by user name and/or e-mail address.
		Reply To:	user defined	
	Broadcast Destination		ON, OFF	
	MDN Response		ON, OFF	
	A/R Full Print		ON, OFF	
	MCF Report		ON, OFF	Select ON to print a fax confirmation after transmission.
	Timeout of MCF Report		OFF, 5 minutes, 15 minutes , 30 minutes, 90 minutes, 150 minutes	
	Print Check Message		ON, OFF	If enabled, when a transmission error occurs the error content is reported.
	USB Memory Setup	File Name	user defined	Max. 64 characters. #n:Assigns a consecutive number as the file name. #d:Assigns a created date and time (YYMMDDHHMMSS format) as the file name.
	TWAIN Setup	Network TWAIN	ON, OFF	
		Port No.	1 ~ 9967 ~ 65535	Range: 1 - 65535
		PC Scan Mode	Simple Scan Mode , Secure Scan Mode	
		Timeout Setting	1 ~ 5 ~ 30 minute(s)	Range: 1 - 30 minute(s)
	Scanner Calibration	Execute	Yes, No	

ITEM	OPTION		VALUE/DESCRIPTION	
Print From USB Memory Setup	Default Settings	Paper Feed	Tray 1 (A4), Tray 2(A4), MP Tray(A4)	Selects the default tray for paper feed, Tray 1 (upper), Tray 2 (lower, if installed) or MP Tray (multi purpose tray).
		Copies	1 - 999	Enter the number of copies of a document to be printed.
		Duplex	ON, OFF	Switches the Duplex (2 sided) function ON/OFF.
		Binding	Long Edge Bind, Short Edge Bind	Display condition: duplex setting is enabled.
		Fit	ON, OFF	Sets the printing mode that can fit print data in the printable area.
Print Setup	Print Menu	Tray Configuration Paper Feed: Auto Tray Switch: Tray Sequence: MP Tray Usage: Media Check:	Tray 1, Tray 2, MP Tray ON, OFF Down, Up, Paper Feed Tray When Mismatching, Do Not Use Enable, Disable	Adjust tray configuration settings.
		Print Setup Copies: Duplex: Binding: Resolution: Toner Save Mode: Mono-Print Speed: Orientation: Lines Per Page: Edit Size: Width: Length:	1 - 999 ON, OFF Long Edge Bind, Short Edge Bind 600x1200dpi, 600dpi M-LEVEL ON, OFF Auto, Color Print Speed, Normal print Speed Portrait, Landscape 5 ~ 64 ~ 128 Line(s) Cassette Size, A4, A5, A6, B5, Letter, Legal 13, Legal 13.5, Legal 14, Executive, 16K(184x260mm), 16K(195x270mm), 16K(197x280mm), Custom, COM-9 Envelope, COM-10 Envelope, Monarch Envelope, DL Envelope, C5 Envelope, Index Card 64 ~ 210 ~ 216 mm 127 ~ 297 ~ 1321 mm	Adjust print setup.

ITEM	OPTION		VALUE/DESCRIPTION	
Print Setup (cont.)	Print Menu (cont.)	Printer Adjust		Adjust general printer settings.
		Manual Timeout:	Disable, 30 seconds, 60 seconds	
		Wait Timeout:	Disable, 5 seconds, 10 seconds, 20 seconds, 30 seconds, 40 seconds , 50 seconds, 60 seconds, 90 seconds, 120 seconds, 150 seconds, 180 seconds, 210 seconds, 240 seconds, 270 seconds, 300 seconds	
		Print Mode Without Color Toner:	Alarm , Cancel	
		Jam Recovery:	Enable , Disable	
		Paper Black Setting:	-2 ~ 0 ~ +2	
		Paper Color Setting:	-2 ~ 0 ~ +2	
		SMR Setting:	-3 ~ 0 ~ +3	Range: -2.00 to +2.00 mm
		BG Setting:	-3 ~ 0 ~ +3	
		Print Position Adjust		
		Front X Adjust:	0.00 mm	
		Front Y Adjust:	0.00 mm	
		Back X Adjust:	0.00 mm	
		Back Y Adjust:	0.00 mm	
		Drum Cleaning	ON, OFF	Set to produce idling of a drum before printing in order to reduce horizontal white lines. This shortens image drum life.
		Hex Dump	ON, OFF	Prints out the data received from the host PC in hexadecimal code.
	Color Menu	Density Control	Auto , Manual	If set to Auto, image density will be automatically adjusted at power on, when a new image drum or toner cartridge is installed, and at intervals of 100, 300 and 500 drum counts. If a 500 drum count interval occurs during a print job it will occur at the end of that job, and will take up to 55 seconds. If set to manual, this adjustment will only be performed when initiated by the next menu item.

ITEM	OPTION		VALUE/DESCRIPTION	
Print Setup (cont.)	Color Menu (cont.)	Adjust Density	Execute	Selecting this will perform the auto density set up immediately.
		Color Tuning/Print Pattern	Execute	Selecting this item prints the colour tuning pattern to help you adjust the colour balance.
		Cyan Highlight	-3 ~ 0 ~ +3	Adjusts image density for each colour component (cyan, magenta, yellow and black). Normal setting is 0.
		Cyan Mid-Tone	-3 ~ 0 ~ +3	
		Cyan Dark	-3 ~ 0 ~ +3	
		Magenta Highlight	-3 ~ 0 ~ +3	
		Magenta Mid-Tone	-3 ~ 0 ~ +3	
		Magenta Dark	-3 ~ 0 ~ +3	
		Yellow Highlight	-3 ~ 0 ~ +3	
		Yellow Mid-Tone	-3 ~ 0 ~ +3	
		Yellow Dark	-3 ~ 0 ~ +3	
		Black Highlight	-3 ~ 0 ~ +3	
		Black Mid-Tone	-3 ~ 0 ~ +3	
		Black Dark	-3 ~ 0 ~ +3	
		Cyan Darkness	-3 ~ 0 ~ +3	Adjusts darkness of each colour (cyan, magenta, yellow and black). Normal setting is 0.
		Magenta Darkness	-3 ~ 0 ~ +3	
		Yellow Darkness	-3 ~ 0 ~ +3	
		Black Darkness	-3 ~ 0 ~ +3	
		Adjust Registration	Execute	Performs automatic colour registration adjustment. Normally this is done on power on and when the top cover is opened and then closed. This process accurately aligns the cyan, magenta and yellow images to the black image.
		Cyan Reg Fine Adj	-3 ~ 0 ~ +3	Performs fine adjustment of image timing in relation to the black image component.
		Magenta Reg Fine Adj	-3 ~ 0 ~ +3	
		Yellow Reg Fine Adj	-3 ~ 0 ~ +3	
		Ink Simulation	OFF, SWOP, EUROSCALE, JAPAN	Selects from a range of industry standard colour swatches.

ITEM	OPTION		VALUE/DESCRIPTION	
Print Setup (cont.)	Color Menu (cont.)	UCR	Low , Medium, High	Selects the limitation of the toner layer thickness. If paper curl occurs in dark printing, selecting Medium or Low sometimes helps reduce curl.
		CMY100% Density	Enable, Disable	When enabled, black areas are produced using 100% C, M, and Y instead of black. This results in a glossier finish.
		CMYK Conversion	ON , OFF	Setting to OFF will simplify the conversion process of CMYK data, which will reduce process time. This setting is ignored when Ink Simulation function is used.
	System Configuration Menu	Personality	Auto Emulation , PCL, IBM PPR, EPSON FX, PS3 Emulation	This item selects which industry standard emulation your MFP should use. When set to Auto, incoming data is examined and the correct emulation is automatically selected each time a print job is received.
		Alarm Release	Manual , Auto	When Manual, non-critical warnings, such as requests for a different paper size, can be cleared by pressing the RESET button. When set to Auto, they are cleared when the print job resumes.
		Auto Continue	ON, OFF	Determines whether or not the MFP will automatically recover from a memory overflow condition.
		Error Report	ON, OFF	If ON , the MFP will print error details when a PostScript emulation error occurs.

ITEM	OPTION		VALUE/DESCRIPTION	
Print Setup (cont.)	PCL Setup	Font Source	Resident , Resident2	Specifies the location of the PCL default font. Normally this will be internal unless additional fonts are installed in the expansion POM slot or additional fonts have been downloaded to RAM as permanent fonts.
		Font No.	10 ~ 190	Sets the PCL font number.
		Font Pitch	0.44~ 10.00 ~99.99 CPI	Sets the width of the PCL default font.
		Font Height	4.00~ 12.00 ~999.75 point(s)	Sets the height of the PCL default font.
		Symbol Set	PC-8	PCL symbol set. If the font source and number are changed to one which does not support the selected symbol set, this must be changed to an available symbol set for that font.
		A4 Print Width	78 Column , 80 Column	Sets the number of columns subject to Auto LF with A4 paper in PCL. This is the value when Auto CR/LF Mode is set to OFF with the 10CPI character.
		White Page Skip	ON, OFF	Selects whether blank pages are printed or not.
		CR Function	CR , CR+LF	Selects whether a received carriage return character (0Dh) also causes a line feed.
		LF Function	LF , CR+LF	Selects whether a received line feed character (0Ah) also causes a carriage return.
		Print Margin	Normal , 1/5 inch, 1/6 inch	Sets the non-printable page area. Normal is PCL compatible.
		True Black	ON, OFF	Selects whether black image data is printed using black toner (True Black ON) or 100% CMY. (Valid in PCL emulation mode only.)

ITEM	OPTION		VALUE/DESCRIPTION	
Print Setup (cont.)	PCL Setup (cont.)	Pen Width Adjust	ON , OFF	The thinnest line width in PCL, a 1-dot line, may look broken. ON : when the thinnest line width is specified, line width is emphasized to look wider. OFF : the line appears as specified.
		Tray ID# Tray 2 : MP Tray :	1 ~ 5 ~ 59 1 ~ 4 ~ 59	Sets the number to specify Tray 2 and MP Tray for the paper feed destination command in PCL5e emulation.
	PS Setup	L1 Tray	Type 1 , Type 2	Switches between Postscript types.
	SIDM Setup	SIDM Manual ID#	0 ~ 2 ~ 9	Set up Pn specified in MANUAL by MANUAL-1 ID No.FX/PPR Emu in CSF control command (ESC EM Pn).
		SIDM Manual2 ID#	0 ~ 3 ~ 9	Set up Pn specified MANUAL by MANUAL-2 ID No.FX/PPR Emu in CSF control command(ESC EM Pn).
		SIDM MP Tray ID#	0 ~ 4 ~ 9	Set up Pn specified TRAYO(MP Tray) by MP Tray ID No.FX/PPR Emu in CSF control command(ESC EM Pn).
		SIDM Tray1 ID#	0 ~ 1 ~ 9	Set up Pn specified TRAY 1by Tray 1 ID No.FX/PPR Emu in CSF control command(ESC EM Pn).
		SIDM Tray2 ID#	0 ~ 5 ~ 9	Set up Pn specified TRAY 2 by Tray 2 ID No.FX/PPR Emu in CSF control command (ESC EM Pn).
	IBM PPR Setup	Character Pitch	10 CPI , 12 CPI, 17 CPI, 20 CPI, Proportional	Specifies character pitch in IBM PPR emulation.
		Font Condense	12CPI to 20CPI , 12CPI to 12CPI	Specifies 12CPI pitch for Condense Mode.
		Character Set	SET-1, SET-2	Specifies a character set.
		Symbol Set	IBM-437	Specifies a symbol set.
		Letter O Style	Enable, Disable	Specifies the style that replaces 9BH with letter o and 9DH with a zero
		Zero Character	Normal , Slashed	Sets the zero to be slashed or unslashed.
		Line Pitch	6 LPI , 8 LPI	Specifies the line spacing.

ITEM	OPTION		VALUE/DESCRIPTION	
Print Setup (cont.)	IBM PPR Setup (cont.)	White Page Skip	ON, OFF	Selects whether blank pages are printed or not.
		CR Function	CR , CR+LF	Selects whether a received carriage return character (0Dh) also causes a line feed.
		LF Function	LF , LF+CR	Selects whether a received line feed character (0Ah) also causes a carriage return.
		Line Length	80 Column , 136 Column	Specifies the number of characters per line.
		Form Length	11 inch, 11.7 inch , 12 inch	Specifies the length of paper.
		TOF Position	0.0 ~ 1.0 inch	Specifies the distance of print from the top edge of the paper.
		Left Margin	0.0 ~ 1.0 inch	Specifies the distance of print from the left hand edge of the paper.
		Fit To Letter	Enable, Disable	Sets the printing mode that can fit print data, equivalent to 11 inches (66 lines), in the LETTER-size printable area.
		Text Height	Same , Diff	Sets the height of a character. SAME: Regardless of CPI, same height DIFF: As CPI, character heights vary.
	EPSON FX Setup	Character Pitch	10 CPI , 12 CPI, 17 CPI, 20 CPI, Proportional	Specifies character pitch in this emulation.
		Character Set	SET-1, SET-2	Specifies a character set.
		Symbol Set	IBM-437	Specifies a symbol set.
		Letter O Style	Enable, Disable	Specifies the style that replaces 9BH with letter o and 9DH with a zero
		Zero Character	Normal , Slashed	Sets the zero to be slashed or unslashed.
		Line Pitch	6 LPI , 8 LPI	Specifies the line spacing.
		White Page Skip	ON, OFF	Selects whether blank pages are printed or not.
		CR Function	CR , CR+LF	Selects whether a received carriage return character (0Dh) also causes a line feed.

ITEM	OPTION		VALUE/DESCRIPTION	
Print Setup (cont.)	EPSON FX Setup (cont.)	Line Length	80 Column, 136 Column	Specifies the number of characters per line.
		Form Length	11.7 inch, 12 inch	Specifies the length of paper.
		TOF Position	0.0 ~ 1.0 inch	Specifies the distance of print from the top edge of the paper.
		Left Margin	0.0 ~ 1.0 inch	Specifies the distance of print from the left hand edge of the paper.
		Fit To Letter	Enable, Disable	Sets the printing mode that can fit print data, equivalent to 11 inches (66 lines), in the LETTER-size printable area.
		Text Height	Same, Diff	Sets the height of a character. SAME: Regardless of CPI, same height DIFF: As CPI, character heights vary.
Network Menu	Network Setup	TCP/IP	Enable, Disable	Enables or disables this network protocol.
		IP Version	IPv4, IPv4+IPv6	Set up the IP version. Display condition: TCP/ IP protocol must be enabled.
		NetBEUI	Enable, Disable	Enables or disables this network protocol.
		NetBIOS Over TCP	Enable, Disable	Enables or disables this network protocol. Display condition: TCP/ IP protocol must be enabled.
		NetWare	Enable, Disable	Enables or disables this network protocol.
		EtherTalk	Enable, Disable	Enables or disables this network protocol.
		Frame Type	Auto, 802.2, 802.3, ETHERNET II, SNAP	Selects the Ethernet MAC layer frame type. Display condition: Netware must be enabled.
		IP Address Set	Auto, Manual	Specifies whether IP address allocation is automatic (DHCP) or manually assigned. Display condition: TCP/ IP protocol must be enabled.

ITEM	OPTION		VALUE/DESCRIPTION	
Network Menu (cont.)	Network Setup (cont.)	IPv4 Address	xxx.xxx.xxx.xxx	Current assigned IP address. To change, enter the address using the numerical keypad. Press Enter to register new address. Display condition: TCP/IP protocol must be enabled.
		Subnet Mask	xxx.xxx.xxx.xxx	Current assigned subnet mask. To change, proceed as above. Display condition: TCP/IP protocol must be enabled.
		Gateway Address	xxx.xxx.xxx.xxx	Current assigned gateway address. To change, proceed as above. Display condition: TCP/IP protocol must be enabled.
		DNS Server (Primary)	0.0.0.0	The IP address of your DNS server (primary).
		DNS Server (Secondary)	0.0.0.0	The IP address of your DNS server (secondary).
		WINS Server (Primary)	0.0.0.0	The IP address of your WINS server (primary).
		WINS Server (Secondary)	0.0.0.0	The IP address of your WINS server (secondary).
		Web	Enable , Disable	Enables or disables web config. facility. Display condition: TCP/IP protocol must be enabled.
		Telnet	Enable, Disable	Enables or disables Telnet config. facility. Display condition: TCP/IP protocol must be enabled.
		FTP	Enable, Disable	Enables or disables communication via FTP. Display condition: TCP/IP protocol must be enabled.
		IPSec	Enable, Disable	Enable via the web page or Configuration Tool.
		SNMP	Enable , Disable	Enables or disables SNMP of FTP (TCP/IP or NetWare). Display condition: TCP/IP protocol must be enabled.

ITEM	OPTION		VALUE/DESCRIPTION	
Network Menu (cont.)	Network Setup (cont.)	Network Scale	Normal , Small	Normal: Can work effectively even when connected to a HUB that has a spanning tree feature. However, printer start up time gets longer when computers are connected to two or three small LANs. Small: Computers can cover from two or three small LANs to a large LAN, but it may not work effectively when it is connected to a HUB with a spanning tree feature.
		HUB Link Setting	Auto Negotiate , 100BASE-TX FULL, 100BASE-TX HALF, 10BASE-T FULL, 10BASE-T HALF	Sets the hub linking method.
		Network PS-Protocol	ASCII, RAW	Select PostScript data format for the network port.
		Factory Defaults	Execute	Select Yes to reload the settings present when the unit was setup by the manufacturer.
	Mail Server Setup	SMTP Server	user defined	Set the host name for the SMTP server.
		SMTP Port	1 ~ 25 ~ 65535	Set the port number.
		SMTP Encryption	None , SMTPS, STARTTLS	Select encryption method.
		POP3 Server	user defined	Set the IP address or host name for the POP3 server.
		POP3 Port	1 ~ 110 ~ 65535	Set the port number.
		POP Encryption	None , POP3S, STARTTLS	Select encryption method.
		Authentication Method	None , SMTP, POP	Set the authentication method.
		SMTP User ID	user defined	Set a user ID for the SMTP server.
		SMTP Password	user defined	Set a password for the SMTP server.
		POP User ID	user defined	Set a user ID for the POP3 server.
		POP Password	user defined	Set a password for the POP3 server.

ITEM	OPTION		VALUE/DESCRIPTION	
Network Menu (cont.)	LDAP Server Setting	Server Setting LDAP Server:	user defined	Edit the LDAP server settings.
		Port No.:	1 ~ 389 ~ 65535	
		Timeout:	10 ~ 30 ~ 120second(s)	
		Max. Entries:	5 - 100 Entries	
		Search Root:	user defined	
		Attribute Name1: Name2: Name3: E-mail Address: Additional Filter:	cn sn givenName mail user defined	Edit the LDAP search attribute if required.
		Authentication Method:	Anonymous , Simple, Digest-MD5, Secure Protocol	Set the authentication method for LDAP.
		User ID:	user defined	Set a user ID and password for the LDAP server. Displays when authentication method is set.
		Password:	user defined	
		Encryption	None , LDAPS, STARTTLS	Set the encryption method.
	Secure Protocol Server Setting	Domain	user defined	Domain must be registered in the DNS server.
Management	Default Mode		Copy , Scan, Print, Fax*	* MC361 & MC561 only.
	Operation Clear	Operation Timeout	After 1 ~ 3 ~ 10 minutes	
		Clear After Job	ON, OFF	
	Sound Control	Key Touch Tone Volume	OFF, Low, Middle , High	Select key touch volume level.
		Fax Buzzer Volume	OFF, Low, Middle , High	Select volume level.
	Local Interface	USB Menu Soft Reset: Speed: USB PS_Protocol: Offline Receive: Serial Number:	Enable, Disable 480Mbps , 12 Mbps ASCII, RAW Enable, Disable Enable , Disable	Default settings listed, these can be changed if required.
	System Setup	Access Control	PIN, User/Password, Disable	Enable access control to restrict usage to authorised user only.
		Unit Of Measure	Inch, Millimeter	Select unit of measure.
		Date Format	mm/dd/yyyy, dd/mm/yyyy , yyyy/mm/dd	Select desired date format.
		Allow All Reports To Print	Enable, Disable	Enable/disable report printing.

ITEM	OPTION		VALUE/DESCRIPTION	
Management (cont.)	System Setup (cont.)	Near Life LED	Enable , Disable	Enable/disable near life LED.
		Status In Near Life	Enable , Disable	Enable: Display a near-life warning. Disable: Do not display a near-life warning.
		Address Information Lock Time Out	1 ~ 3 ~ 10 minute(s)	Enter time-out duration.
		USB Memory Interface	Enable , Disable	Select disable to turn off scan to USB function.
		Panel Contrast	-10 ~ 0 ~ +10	Adjust the LCD panel contrast.
	Power Save	Power Save Time	1 minute, 2 minutes, 3 minutes, 4 minutes, 5 minutes, 10 minutes, 15 minutes, 30 minutes , 60 minutes, 120 minutes	Select desired time interval before machine enters power save mode.
		Sleep Time	1 minute, 2 minutes, 3 minutes, 4 minutes, 5 minutes, 10 minutes , 15 minutes, 30 minutes, 60 minutes, 120 minutes	Select desired time interval before machine enters sleep mode.
		Silent Mode	ON , OFF	Enable/disable silent mode.
		ECO Mode	ON , OFF	When ON, if the machine is in power save mode and you send a small print job (1 or 2 pages), the machine will print the job without warming the fuser to the "normal" operating temperature beforehand.
	Memory Setup	Receive Buffer Size	Auto , 0.5 MB, 1 MB, 2 MB, 4 MB, 8 MB	Specify the size of the buffer you want to use to receive data.
		Resource Save	Auto, OFF , 0.5 MB, 1 MB, 2 MB, 4 MB, 8 MB	Specify the size of the buffer you want to use for resource saving.
	Storage Maintenance Setup	Check File System	Execute	Making changes will automatically restart the system.
		Erase SD Memory Card	Execute	Deletion of all data stored in the SD Card. Data cannot be recovered.
		Initial Lock	Enable , Disable	Enable/disable initial lock.

ITEM	OPTION		VALUE/DESCRIPTION	
Management (cont.)	Encryption Setup	Job Limitation	Disable, Encrypted Job Only	Enable/disable limitation setting.
	Language Maint Setup	Initialize	Execute	Making changes will automatically restart the system.
	Admin Password	New Password	user defined	Enter new password. Retype your password when prompted to verify. Note: password must be six characters or more.
		Enter Password (Verify)	user defined	
	Reset Settings		Execute	Continuing will automatically restart the system.
	Job Log Setup	Save Job Log	Enable, Disable	
	Print Statistics	Supplies Report	Enable, Disable	Indication of frequency of consumable exchange/non indication is set.
		Reset Main Counter	Execute	Zeros the counter.
User Install	Time Setup	Auto Setup SNTP Server (Primary): SNTP Server (Secondary):	user defined user defined	Set todays date and time automatically.
		Manual Date: Time:	user defined user defined	Enter todays date and time using the keypad. Use the arrow keys to move between digits.
	Set Daylight Saving		ON, OFF	Enable/disable daylight saving setting.
	Time Zone		00:00	Range: -12:00 to +12:00 minutes in 15 minute increments.
	Power Save	Power Save Enable	ON, OFF	Enable/disable power save mode.
		Sleep	ON, OFF	Enable/disable sleep mode.
	High Humid Mode		ON, OFF	If moistened paper is curled significantly after printing, change the setting to ON. Note: Moistened paper means paper that has been left in a high-humidity environment.
	MF(Tone)/DP(Pulse)		Tone, Pulse	Select the appropriate dialling method for the region you are in.

ITEM	OPTION		VALUE/DESCRIPTION	
User Install (cont.)	Reception Mode		Fax Ready Mode , Tel/Fax Ready Mode, Ans/Fax Ready Mode, Tel Ready Mode, DRD	Specify the reception mode.
	DRD Type		Type 1 , Type 2, Type 3, Type 4	Allows the machine to detect a distinctive ring if it has been enabled on the phone line.
	Dial Tone Detection		ON, OFF	Enable/disable dial tone detection.
	Busy Tone Detection		ON , OFF	Enable/disable busy tone detection.
	TTI Register/ Edit	TTI 1: TTI 2: TTI 3:	user defined	Register/Edit transmit terminal identification (TTI) settings.
	Standard TTI		TTI 1 , TTI 2, TTI 3	Select default TTI from the registered list.
	TTI Number		user defined	Enter your fax number.
	TTI Calendar Type		yyyy/mm/dd, mm/dd/yyyy, dd/mm/yyyy	Specify the TTI calendar date format.
	Super G3		ON , OFF	OFF=G3, ON=SuperG3
	Erase Privacy Data		Execute	Continuing will delete all settings and registered data.

a. MC361 and MC561 only.

INDEX

A

Adding a telephone handset . 32
Address book
 adding a group entry 27
 adding an email entry..... 26
 deleting a group entry 28
 deleting an email entry..... 26
 editing a group entry 28
 editing an email entry 27

D

Direct Print..... 80

E

Email Reception 48
Encryption
 IPSec 71
 SSL/TLS..... 67
error notification 75
EtherTalk..... 45

F

Fax
 automatic redial..... 31
 initial setup..... 29
 reception mode..... 31

I

IEEE802.1X 57
Initializing network 83
IP Filtering..... 61, 74
IPP printing 69
IPSec..... 64, 71

L

LDAP 58

M

MAC Address
 Filtering 62, 74
Maintenance..... 65

N

NBT/NetBEUI 46
NetWare..... 44

P

Phone book
 adding a group dial entry . 34
 adding a speed dial entry . 33
 deleting a group dial entry 34
 deleting a speed dial entry 34
Printer Trap..... 54

S

Security..... 60
SMTP (Email Send) 46, 49
SNMP 53
SNTP 65
SSL/TLS 62, 67

T

TCP/IP..... 42

W

Web Browser..... 67
Web Printing 66
Windows Rally..... 56, 57, 58, 59

OKI EUROPE LIMITED

Blays House

Wick Road

Egham

Surrey, TW20 0HJ

United Kingdom

Tel: +44 (0) 208 219 2190

Fax: +44 (0) 208 219 2199

WWW.OKIPRINTINGSOLUTIONS.COM

